

CLEARFIL MAJESTY™ Esthetic

Outstanding aesthetics

Good radiopacity

Fluorescent



OUTSTANDING AESTHETICS

IN ONLY ONE COLOR LAYER

With CLEARFIL MAJESTY™ Esthetic, you don't need different color layers any more to get an aesthetic restoration. Just choose a single matching shade.

Conventional esthetic composites are applied in several color layers, in order to recreate the look of natural tooth substance. CLEARFIL MAJESTY™ Esthetic does it, however, by using just one shade.



Cavity



Restoration with CLEARFIL MAJESTY™ Esthetic – with 1 shade only.



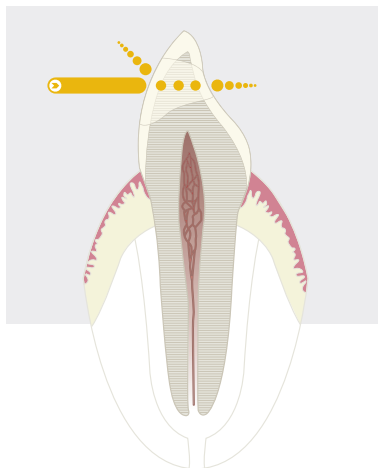
Restoration with a regular esthetic composite (FSX) using 1 shade only. A dark shadow can be seen.



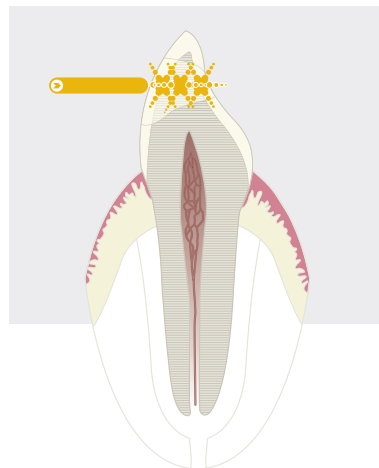
LIGHT-DIFFUSION LIKE GROWN TOOTH SUBSTANCE

With CLEARFIL MAJESTY™ Esthetic, the optical properties of natural tooth substance can be faithfully reproduced for the first time. Cavity margins can not be recognized after treatment, unlike with conventional composites.

Natural tooth substance absorbs light and diffuses it in all directions. Due to its unique composition, CLEARFIL MAJESTY™ Esthetic offers nearly identical properties. Conventional composites, on the other hand, often appear darker than natural tooth substance, as they absorb light and do not diffuse it.

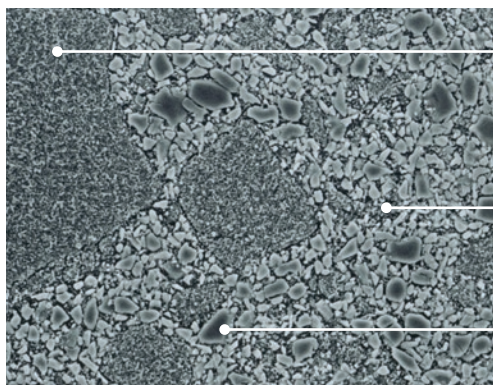


Most composites transmit light directly



CLEARFIL MAJESTY™ Esthetic diffuses light naturally

FILLER IN A UNIQUE COMPOSITION



By courtesy of Dr. Toshimoto Yamada, DDS, PhD/Toranomon Hospital

Light-diffusion filler.

Organic filler including nanofillers with high transparency. It diffuses light like natural tooth substance.

Highly refractive index matrix.

The matrix shows a high refraction, which reduces color change after polymerization.

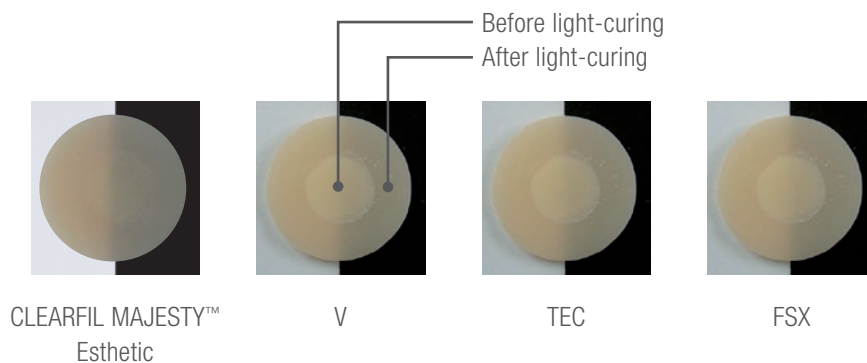
Radiopaque nanofiller.

Thanks to this filler allows CLEARFIL MAJESTY™ Esthetic can be clearly recognized on an X-ray and can also be polished to a high shine.

HARDLY DISTINGUISHABLE FROM NATURAL TOOTH SUBSTANCE

LEAST COLOR CHANGE AFTER LIGHT-CURING

The fact that CLEARFIL MAJESTY™ Esthetic does only slightly change its color after light-curing also makes your work easier. As you work, you can already see whether the color matches. Other aesthetic composites usually become more transparent after light-curing.



OTHER ADVANTAGES:

- ✓ CLEARFIL MAJESTY™ Esthetic is little affected by ambient light. With a working time of 4.5 minutes, you can work with CLEARFIL MAJESTY™ almost twice as long as with other composites, which will already have cured in this time.
- ✓ The material is easy to use and does not stick to instruments.
- ✓ CLEARFIL MAJESTY™ Esthetic offers high abrasion resistance and so can be used for all kinds of cavities without a problem.

GOOD RADIOPACITY. FLUORESCENCE, LIKE REAL

After being applied to the cavity, CLEARFIL MAJESTY™ Esthetic is hardly distinguishable from natural tooth substance. Due to its radiopacity, however, the material can easily be located. CLEARFIL MAJESTY™ Esthetic can also hardly be distinguished from natural tooth substance thanks to its fluorescence.



Natural
Tooth

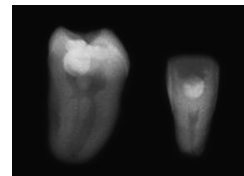
CLEARFIL™
MAJESTY
Esthetic

FSX

CX

TEC

EX



AND HERE IS WHAT IT LOOKS LIKE IN PRACTICE



Class III cavity.



1 shade restoration with CLEARFIL
MAJESTY™ Esthetic, shade A2.



Diastema of upper anterior
teeth.

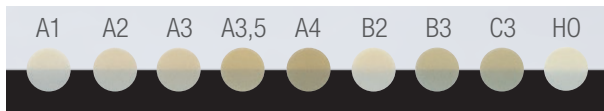


Restoration with CLEARFIL
MAJESTY™ Esthetic, shades
A2 and A3.

By courtesy of Dr. J.D. Scholtanus,
Wergea/The Netherlands

EASY SHADE SELECTION

STANDARD SHADES



The 9 standard shades meet most of restorations. Additionally, 8 complementary shades for tricky cases are available.

COMPLEMENTARY SHADES



HO: Hollywood Opaque, T: Transparent, AM: Amber, E: Enamel, XL: Extra Light, OC: Occlusal

ORDERING INFORMATION

2160 EU CLEARFIL MAJESTY™ Esthetic	A1	(3.6g/2ml)
2161 EU CLEARFIL MAJESTY™ Esthetic	A2	(3.6g/2ml)
2162 EU CLEARFIL MAJESTY™ Esthetic	A3	(3.6g/2ml)
2163 EU CLEARFIL MAJESTY™ Esthetic	A3.5	(3.6g/2ml)
2164 EU CLEARFIL MAJESTY™ Esthetic	A4	(3.6g/2ml)
2166 EU CLEARFIL MAJESTY™ Esthetic	B2	(3.6g/2ml)
2167 EU CLEARFIL MAJESTY™ Esthetic	B3	(3.6g/2ml)
2170 EU CLEARFIL MAJESTY™ Esthetic	C3	(3.6g/2ml)
2172 EU CLEARFIL MAJESTY™ Esthetic	T	(3.6g/2ml)
2173 EU CLEARFIL MAJESTY™ Esthetic	E	(3.6g/2ml)
2174 EU CLEARFIL MAJESTY™ Esthetic	XL	(3.6g/2ml)
2175 EU CLEARFIL MAJESTY™ Esthetic	OC	(3.6g/2ml)
2177 EU CLEARFIL MAJESTY™ Esthetic	OA2	(3.6g/2ml)
2178 EU CLEARFIL MAJESTY™ Esthetic	OA3	(3.6g/2ml)
2179 EU CLEARFIL MAJESTY™ Esthetic	OA4	(3.6g/2ml)
2182 EU CLEARFIL MAJESTY™ Esthetic	HO	(3.6g/2ml)
2185 EU CLEARFIL MAJESTY™ Esthetic	AM	(3.6g/2ml)

2152 EU CLEARFIL MAJESTY™ Esthetic shade guide





EU Importer

Kuraray Europe GmbH

Philipp-Reis-Strasse 4,
65795 Hattersheim am Main, Germany

Phone +49 (0)69 305 35 835

Fax +49 (0)69 305 98 35 835

www.kuraraynoritake.eu

centralmarketing@kuraray.com

- Before using this product, be sure to read the Instructions for Use supplied with the product.
- The specifications and appearance of the product are subject to change without notice.
- Printed color can be slightly different from actual color.

"CLEARFIL" is a trademark of KURARAY CO., LTD.



Kuraray Noritake Dental Inc.

1621 Sakazu, Kurashiki, Okayama 710-0801, Japan
Website www.kuraraynoritake.com



06/2024 MKA00642