

LITHIUM DISILICATE CROWN PLACEMENT

USING KATANA™ CLEANER AND
PANA VIA™ SA Cement Universal



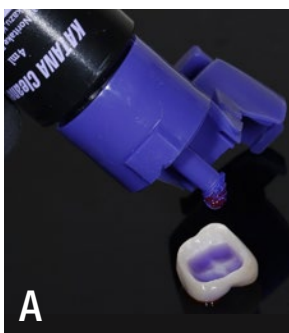
CASE AND IMAGES COURTESY OF
RICHARD YOUNG DDS, SAN BERNARDINO, CA

Easy procedure, reliable outcome: that is what most dental practitioners may wish for when placing indirect restorations. The following clinical case example is used to demonstrate an easy, but highly successful clinical protocol for the luting of a lithium disilicate crown.



Fig. 1.

Lithium disilicate crown after etching of the intaglio surface with hydrofluoric acid and try-in.



OR

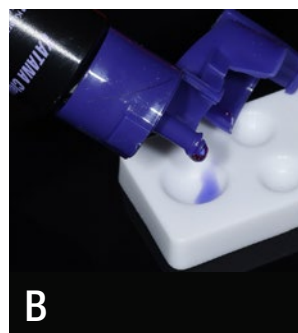


Fig. 2a.

Application of KATANA™ Cleaner into the crown for a complete removal of contaminants such as proteins from blood and saliva, which may compromise the performance of any resin cement system.

OR Fig. 2b.

Alternatively, KATANA™ Cleaner is applied into a mixing well.



Fig. 3.
Application of KATANA™ Cleaner to the restoration.



Fig. 4.
KATANA™ Cleaner is applied to the prepared tooth structure in the same way (rubbing for ten seconds followed by rinsing and drying).



Fig. 5.
Application of PANA VIA™ SA Cement Universal into the cleaned crown.



Fig. 6.
The cement contains a unique silane coupling agent – the LCSi monomer – for a strong and reliable bond to lithium disilicate and other restorative materials like glass ceramics and hybrid ceramics.



The Silane is activated in the mixing tip by Original MDP



Fig. 7.
Easy clean-up after two to five seconds of tack-curing.



Fig. 8.

The excess resin cement is in its gel-state and removed in one piece with an explorer.



FINAL SITUATION

Fig. 9.

Treatment outcome immediately after crown placement.

VISIT THE PRODUCT PAGE ONLINE FOR MORE DETAILS

WHAT CAN YOU EXPECT TO FIND ONLINE

- ✓ General information about PANAIA™ SA Cement Universal and KATANA™ Cleaner
- ✓ Full Product Assortment
- ✓ Safety Data Sheets



KURARAYNORITAKE.EU