

## Luster Porcelain

### Special Features

- ① Luster Porcelain reproduces the fine surface structure and luster of natural tooth.
- ② A unique combination of fine surface particles produces a selective reflection of light which results in the same opalescence seen in natural teeth.
- ③ Luster Porcelain has translucent, bright, vivid colors, therefore, darkening at the incisal edge or at the occlusal surface will not occur.
- ④ Color changes in natural teeth caused by aging have been thoroughly studied. Luster Porcelain features a complete line of colors consistent with these changes.

### Shades and Applications

#### LT0 (Luster T0)

Use mainly for a highly translucent incisal edge and for the simulation of highly translucent enamel, likely to be seen through the dentin.

#### LT1 (Luster T1)

Effective for achieving the brightness of natural tooth enamel.

#### TBlue (Translucent Blue)

Use mainly at the incisal edge of juvenile's restoration to reproduce a pale blue and youthful translucency.

#### Aqua Blue 1<sup>\*</sup>

More bluish than LT TBlue. Mixing with other Luster or Tx is recommended.

#### Aqua Blue 2<sup>\*</sup>

More bluish than LT TBlue and a little grayish, i.e. softer, than **Aqua Blue 1**. Mixing with other Luster or Tx is recommended.

#### LT Natural

Use mainly on the incisal edge and proximal surface to reproduce a high translucency seen in the elderly.

#### LT Super Gray<sup>\*</sup>

More gray than LT Natural. Useful for reducing value on incisal and for creating beautiful contrast effect with Translucent porcelains.

#### LT Yellow<sup>\*</sup>

Use to reproduce a light "HALO EFFECT" to show a depth in the central occlusal surface. Apply LT Yellow on Mamelon Orange shade to avoid the permeation of Orange shade.

#### Incisal Aureola

Use to reproduce the "HALO EFFECT" caused by the full reflection of light at the incisal edge.

#### Sun Bright

Use to reproduce the orange enamel like color at the incisal edge seen in the middle-age and elderly. Also, to reproduce a crown with a deep orange or amber enamel-like color.

#### Creamy Enamel

Use mainly at the cusp of molars, and occasionally for the area from the distal and proximal surfaces adjoining the incisal edge of the front teeth through the area surrounding the angle of the incisal edge. combination with other shades.

#### Creamy White

Use to achieve a dense, milky color. Also, to be mixed and used in combination with other LP shades.

#### attention

##### When Luster Porcelain should not be used

- ① When the distance between the tip of a metal frame and the incisal edge of the porcelain is too short.
- ② When porcelain does not fully cover the molar occlusal surface.
- ③ When the thickness of the porcelain is extremely thin and, therefore, the opaque reflection rate is high.

For the above cases, the usual enamel and translucent porcelain should be used to produce a more natural appearance.

## CCV (Clear Cervical) Porcelain

To create depth of color, without changing chroma

### Shades and Applications

**CCV-1<sup>\*</sup>** For bright shades like shades A1 to A3

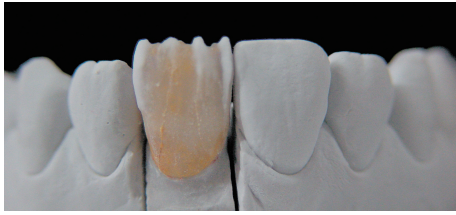
**CCV-2<sup>\*</sup>** For dark shades like A3.5 to A4

**CCV-3<sup>\*</sup>** For reproducing surfaces exposed by receding gums

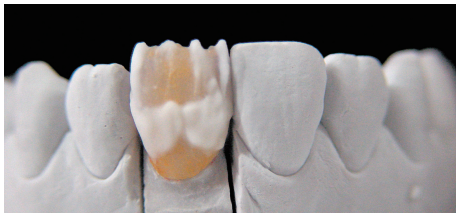
**CCV-4<sup>\*</sup>** ① Same as CCV-3, but with a more reddish hue  
② For anterior lingual fossae

※ Not available in Cerabien and Ti-22

## The example of Build-up



LT1 is the basic shade color in the Luster Porcelain. TBlue is applied at the incisal edge angle to achieve a strong blue enamel translucency. LT0 is applied at the incisal edge to achieve higher translucency.



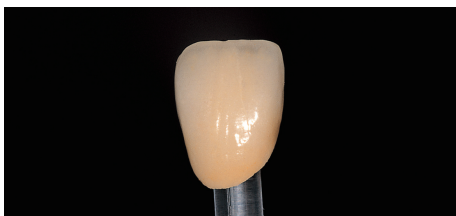
Use Creamy Enamel to create the natural enamel appearance showed in the center of the crown. Also apply Creamy Enamel on the marginal ridge of the lingual side.



Except the cervical area, apply the whole crown with LT1. Also apply LT1 or LT Yellow on the lingual side to create a depth.



Apply CCV-1 or CCV-2 on the cervical area to create the bright cervical color. Then, bake it.







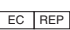


Completion

## Color sample



### SYMBOLS USED IN A LABEL

 MANUFACTURER	 BATCH CODE	<b>EU Authorized Representative</b> Name: Kuraray Europe GmbH Address: Phillipp-Reis-Str.4 65795 Hattersheim am Main, Germany	 <b>1639</b>
 USE BY	 CATALOGUE NUMBER		
 CONSULT INSTRUCTIONS FOR USE	 AUTHORISED REPRESENTATIVE IN THE EUROPEAN COMMUNITY		

*Noritake*

**Kuraray Noritake Dental Inc.**  
 300 Higashiyama, Miyoshi-cho, Miyoshi, Aichi 470-0293, Japan  
 Phone +81-561-32-8953 Fax +81-561-32-8976

<http://www.kuraraynoritake.com>