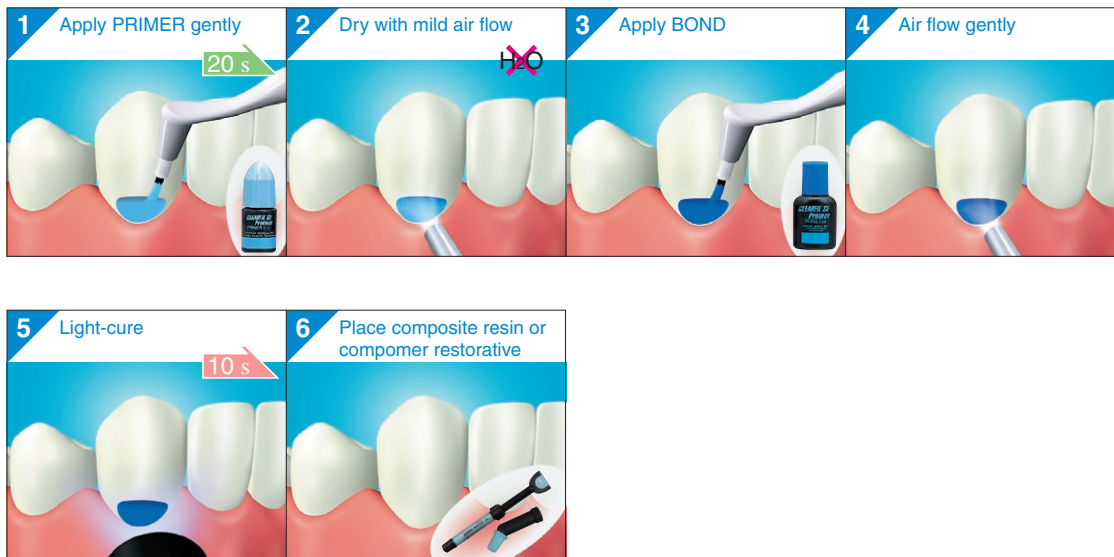


- Case A** Direct restorations using light-cured composite resin or compomer
- Case B** Cavity sealing as a pretreatment for indirect restorations
- Case C** Treatment of hypersensitive and/or exposed root surfaces
- Case D** Intraoral repairs of fractured crowns/bridges made of porcelain, hybrid ceramics or composite resin using light-cured composite resin
- Case E** Surface treatment of prosthetic appliances made of porcelain, hybrid ceramics and cured composite resin
- Case F** Core build-ups using light- or dual-cured composite resin
- Case G** Cavity sealing under amalgam restorations



Case A

Direct restorations using light-cured composite resin or compomer



Case B

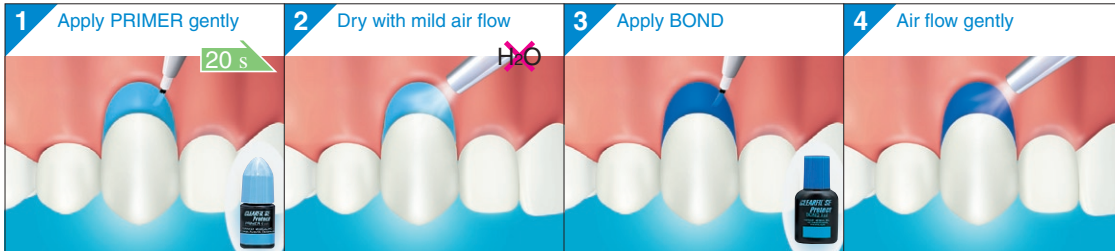
Cavity sealing as a pretreatment for indirect restorations



③

Case C

Treatment of hypersensitive and/or exposed root surfaces



Case D

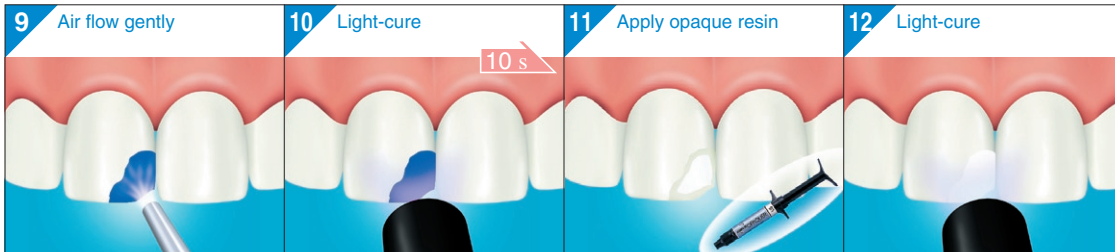
Intraoral repairs of fractured crowns/bridges made of porcelain, hybrid ceramics or composite resin using light-cured composite resin (1/2)



⑤-1

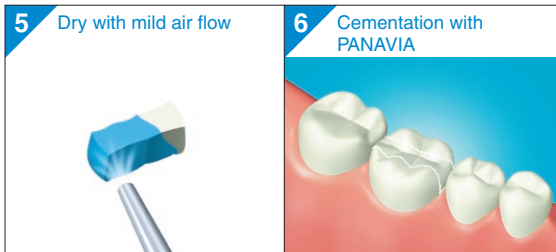
Case D

Intraoral repairs of fractured crowns/bridges made of porcelain, hybrid ceramics or composite resin using light-cured composite resin (2/2)



Case E

Surface treatment of prosthetic appliances made of porcelain, hybrid ceramics and cured composite resin



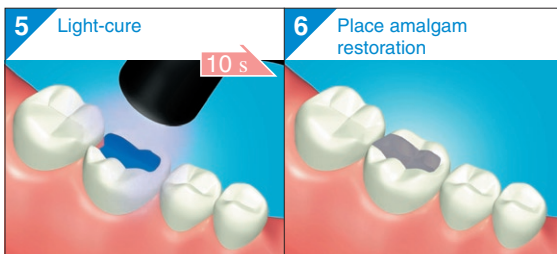
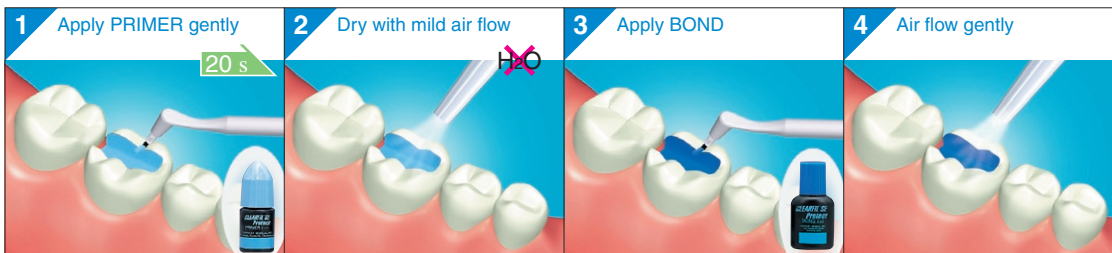
Case F

Core build-ups using light- or dual-cured composite resin



Case G

Cavity sealing under amalgam restorations



G