

# **TEETHMATE™ DESENSITIZER**

CLINICAL CASE REPORT



# CREATING HYDROXYAPATITE

Dr. Kobayashi and Dr. Honda show you how to treat sensitive teeth effectively. And for the first time naturally. TEETHMATE™ DESENSITIZER creates hydroxyapatite to make such treatments effective.

They create hydroxyapatite exactly where it is needed. They use it to close exposed dentin tubules and enamel cracks. And they treat their patients' teeth after bleaching.

Let's see how Dr. Kobayashi and Dr. Honda treat dentinal hypersensitivity after bleaching, after gingival recessions and after scaling and root planing.

## CASE 1: **TEETH TREATMENT AFTER BLEACHING**

- ①② The pictures show the application of TEETHMATE™ DESENSITIZER on the upper front teeth after bleaching.
- ③ After the treatment you can see on the picture that TEETHMATE™ DESENSITIZER doesn't influence the esthetics.



Source: Dr. Ken Kobayashi, Japan

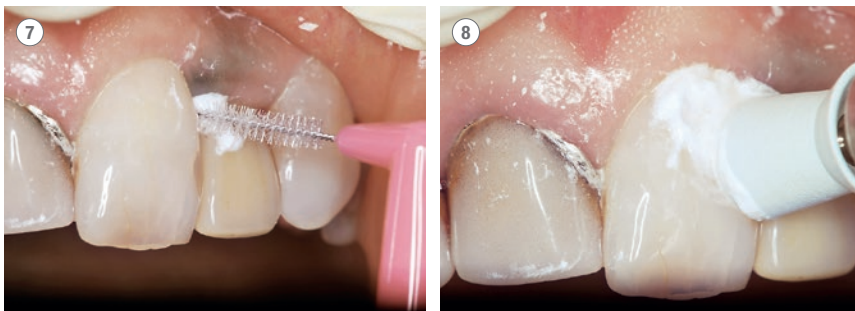
CASE 2: **DENTIN TREATMENT AFTER GINGIVAL RECESSION**

- ④ The patient has complained about sensitivity of tooth 23.
- ⑤ First, Dr. Honda cleans the tooth surface and the class V composite with a fine abrasive.
- ⑥ Then he rubs TEETHMATE™ DESENSITIZER on the sensitive area for 30 seconds and washes it away with water.



CASE 3: **DENTIN TREATMENT AFTER GINGIVAL RECESSION**

- ⑦ Dr. Honda uses a commercially available interdental brush for a better application to the approximal areas.
- ⑧ It is good practice to use a rubber cup when applying TEETHMATE™ DESENSITIZER over a wide area.



CASE 4: **DENTIN TREATMENT AFTER SCALING AND ROOT PLANING**

- ⑨ The patient has complained about sensitivity of tooth 22. First Dr. Honda removes plaque and calculus using an air scaler. He uses a fine abrasive to clean the tooth surface.
- ⑩ He applies TEETHMATE™ DESENSITIZER to the tooth, rubs it in for 30 seconds and washes it away with water.
- ⑪ The TEETHMATE™ DESENSITIZER treatment shows an invisible result.



## HAPPY WITH THEIR TEETH AGAIN

As you can see, rinsing TEETHMATE™ DESENSITIZER with water from the tooth surface and gingiva shows great results. Your patients will love the neutral taste and the result. And most of all - your patients will be happy with their teeth again.



Source: Dr. Ken Kobayashi, Japan



EU Importer

**Kuraray Europe GmbH**

Philipp-Reis-Strasse 4,  
65795 Hattersheim am Main, Germany

Phone +49 (0)69 305 35 835

Fax +49 (0)69 305 98 35 835

[www.kuraraynoritake.eu](http://www.kuraraynoritake.eu)

[centralmarketing@kuraray.com](mailto:centralmarketing@kuraray.com)

- Before using this product, be sure to read the Instructions for Use supplied with the product.
- The specifications and appearance of the product are subject to change without notice.
- Printed color can be slightly different from actual color.

"TEETHMATE" is a trademark of Kuraray Co., Ltd.



**Kuraray Noritake Dental Inc.**

1621 Sakazu, Kurashiki, Okayama 710-0801, Japan  
Website [www.kuraraynoritake.com](http://www.kuraraynoritake.com)

CE 0197



06/2024 MKA00585