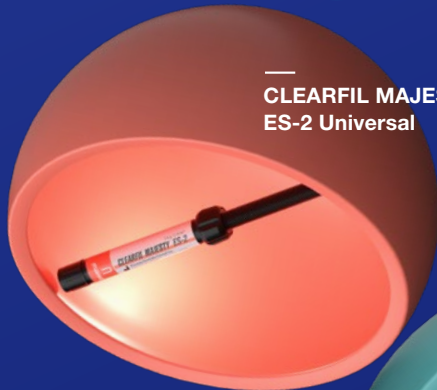


Universal Excellence



—
CLEARFIL MAJESTY™
ES-2 Universal



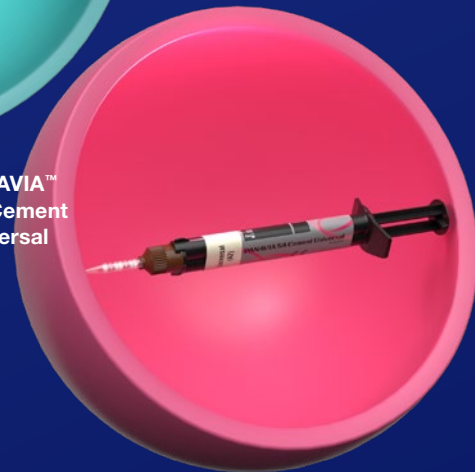
—
KATANA™
Cleaner



—
CLEARFIL™
Universal Bond Quick 2



—
CLEARFIL MAJESTY™
ES Flow Universal



—
PANAVIA™
SA Cement
Universal

Smart With Streamlined Solutions

**Fewer components.
Easy steps.
Streamlined procedures.
Minimal errors**

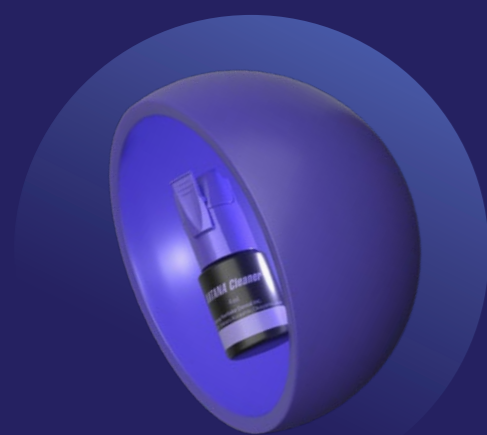
At Kuraray Noritake Dental Inc., we understand the demands of modern dental practices. Balancing complex procedures, tight schedules, and patient needs is no easy task. That is why we have been on a relentless journey to streamline, enhance, and refine every step of your work for decades. Our vision is clear: a world where your materials and tools work seamlessly in your hands, where complexity is minimized, and where you are given enough time to focus on what matters most: the individual desires and needs of every single patient. This is the future of dentistry, and together, we're making it happen.



Less Complexity = More Confidence

Why universal products?

We understand how challenging it can be to balance efficiency and quality. That's why we refuse to compromise: if a solution doesn't deliver both, we won't proceed. Our aligned products—developed with advanced technology—combine ease of use with reliable results, so you can focus on what matters most. That's universal excellence.



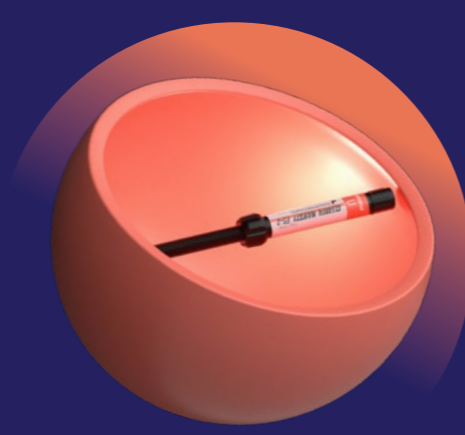
KATANA™
Cleaner

Cleaning
independent
of substrate



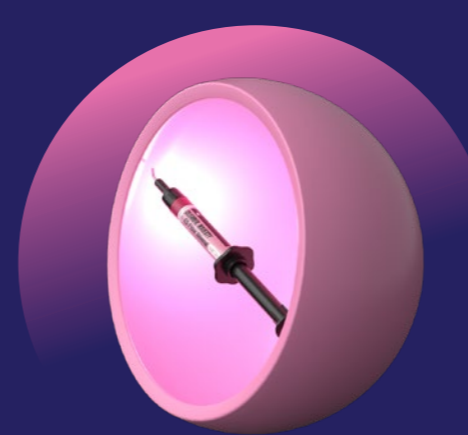
CLEARFIL™
Universal Bond Quick 2

Bonding made
effortless



CLEARFIL MAJESTY™
ES-2 Universal

Elevating
single-shade
restorations



CLEARFIL MAJESTY™
ES Flow Universal

Intuitive shade
matching goes
flowable



PANAVIA™ SA Cement
Universal

Streamlined
cementation

Why universal procedure solutions?

While each of our universal products is crafted to blend into your workflow, allowing you to streamline certain steps, it is the combination of these materials that offers you the great benefits. It is not for nothing that our teams of developers in Japan collaborate closely to make sure that the products they design are perfectly aligned to each other.

For every procedure

Our products are made for each other and designed to work consistently, allowing you to focus on patient care rather than the materials you use.

Fewer components, streamlined procedures

By streamlining your materials, we aim to simplify your day, reduce unnecessary complexity, and increase your efficiency.

Supporting minimally invasive techniques

We develop solutions that support gentle, defect-oriented treatments—always keeping each patient's well-being at the center of care.

Streamlined inventory, Less waste

With fewer components to stock, your team will manage the inventory with ease, and you will positively impact the environment by cutting down on waste.



Direct dentistry

Fewer components, Maximized efficiency

Whether you are restoring an anterior or posterior cavity with composite, we have the right product combination for you. It is tailored to your preferences while aiding your decisions. Here is how our products streamline your restorative procedures:

Preparing

After tooth preparation, use KATANA™ Cleaner to remove contamination, offering a high cleaning effect with MDP salt.

Bonding

Apply CLEARFIL™ Universal Bond Quick 2 using your preferred etching technique. A single coat—no waiting—minimizes contamination risk and creates a strong, uniform bond without pooling.

Filling

For cavity restoration, CLEARFIL MAJESTY™ ES-2 Universal offers a universal paste-type option with a smart shade concept and great handling. Alternatively, consider CLEARFIL MAJESTY™ ES Flow Universal for excellent shade-matching with just two shades. It has mechanical properties comparable to paste-type composites.

Finishing and polishing

Finishing and polishing restorations from the CLEARFIL MAJESTY™ ES series are quick and easy, thanks to advanced filler technology. For innovative polishing tools, use TWIST™ DIA for Composite.

Prosthetic dentistry

Strong bond, Long life

The longevity of indirect restorations relies heavily on the bond quality between the tooth and the prosthetic work. In minimally invasive designs with limited mechanical retention, strong chemical adhesion is crucial for long-term success.

Preparing

Prepare the tooth as needed and take your impression. With KATANA™ Zirconia Multi-Layered materials, your lab can create thin, high-performance restorations that require minimal space. Ask about the planned thickness to preserve tooth structure.

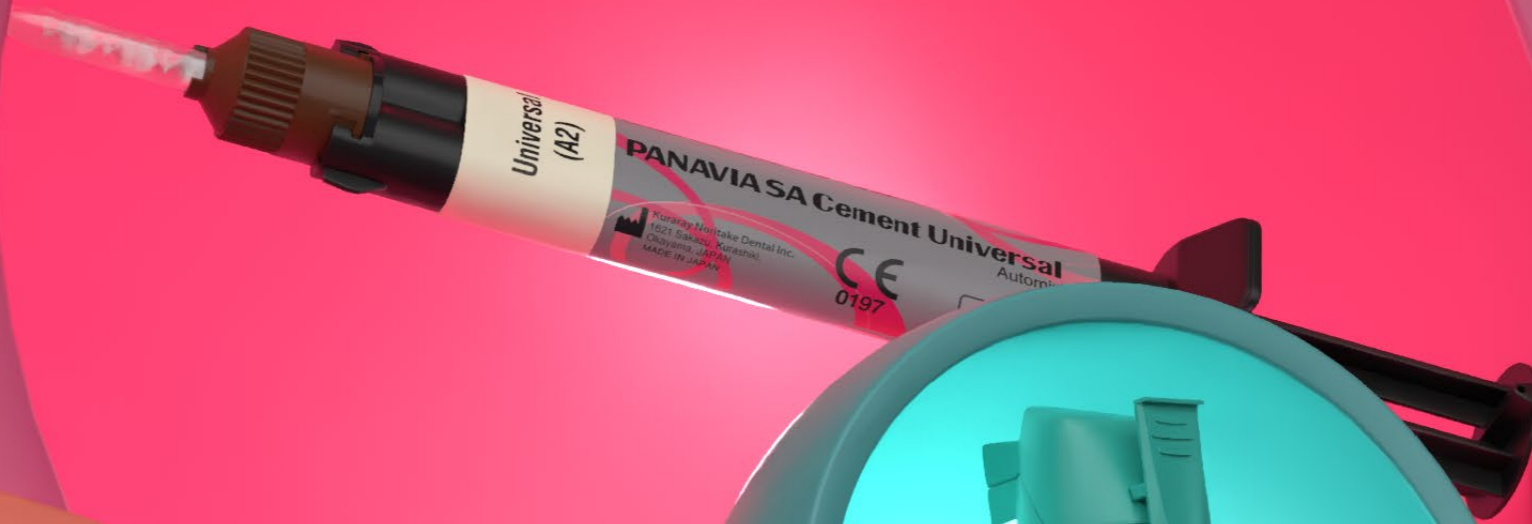
Try-in and cleaning

After checking the fit and aesthetics of the restoration, the surfaces are contaminated with saliva and blood. Either send it back to the lab for cleaning and pre-treatment, or simply use KATANA™ Cleaner to remove contamination from pre-treated bonding surfaces.

Cementing

After cleaning, apply PANA VIA™ SA Cement Universal for cementation, providing for a strong bond thanks to proprietary LCSi and MDP monomers, without needing separate primers. For even higher bond strength to enamel and dentin, apply CLEARFIL™ Universal Bond Quick 2 to the tooth, first.

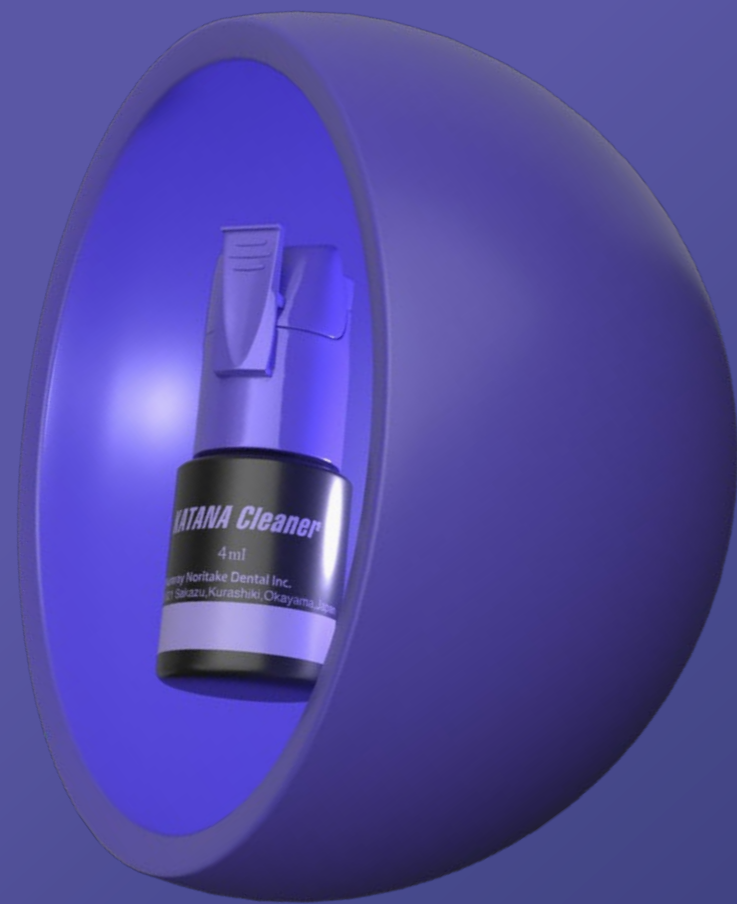
Five products: A deep dive



KATANA™ Cleaner

Cleaning independent of substrate

A clean surface is key to any restoration. With its pH value of 4.5, KATANA™ Cleaner is thoughtfully designed to quickly and effectively remove contaminants from both tooth surfaces and restorations, helping you achieve a clean high energetic bonding surface promoting a stronger, more reliable bond.



Quick and effective

Use KATANA™ Cleaner whenever you are in need of a simple, fast cleaning process that gets surfaces ready for bonding or cementation.

Intra- and extra-oral use

Unlike many other cleaning solutions, the product is even designed for intra-oral use, a door opener for a wide range of applications.

Versatile across substrates

Whether cleaning tooth surfaces or restorative materials, KATANA™ Cleaner supports a dependable bond.

The key component enabling a high cleaning effect

KATANA™ Cleaner contains MDP salt, which is based on 10-Methacryloyloxydecyl Dihydrogen Phosphate. Applied to the (potentially) contaminated surface, it removes proteins dependably and efficiently. In this way, it creates optimal bonding conditions on the tooth and the restoration.

CLEARFIL™ Universal Bond Quick 2

The Everything Bond

Designed to enhance your workflow, CLEARFIL™ Universal Bond Quick 2 provides robust performance across a variety of clinical situations. Suitable for every etching technique, for direct and indirect restoration as well as core build-up procedures, it provides precisely the versatility and flexibility you need.



Fast application

With no waiting time, application is quick and streamlines the procedure. This reduces the risk of contamination, even when moisture control is difficult.

Consistently strong and durable bond

Utilizing Advanced Monomer Technology, the adhesive creates a solid bond to enamel, dentin and composite, providing for long-lasting restorations.

Minimized risk of pooling

Enhanced flowability creates a thin, uniform bonding layer. This minimizes the risk of pooling and maintains the precise morphology of the preparation.

The secret behind speed, dependability and versatility Advanced Monomer Technology

Original MDP Monomer Responsible for a strong and durable bond to hydroxyapatite and a wide range of restorative materials

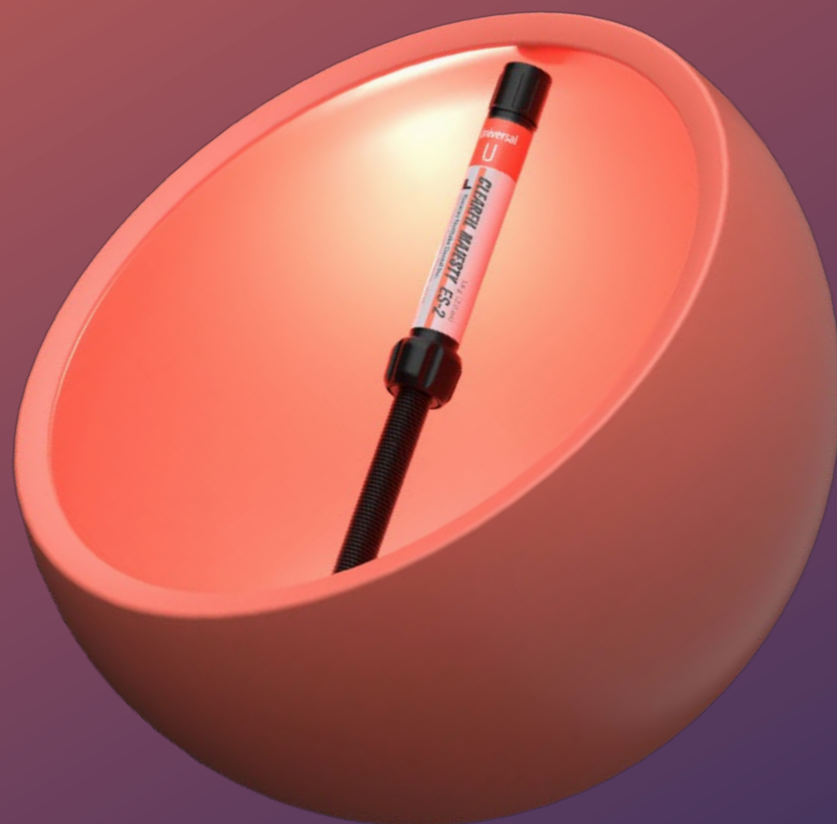
Amide Monomer Allowing for rapid penetration into the tooth structure and forming a stable, hydrophobic cross-linked network during polymerization

Urethane Tetra Methacrylate (UTMA) Monomer establishing a particularly thin, strong and stable bonding layer, improve the strength of the bonding layer itself. This results in an increased resistance to shrinkage forces.

CLEARFIL MAJESTY™ ES-2 Universal

Elevating single-shade restorations

We know that determining the exact shade of a patient's tooth can be challenging, which is why we developed the CLEARFIL MAJESTY™ ES-2 Universal lineup, consisting of three shades—two for the anterior region and one for the posterior region. Because they blend naturally with the surrounding tooth structure, you can use them confidently. Depending on how many cavity walls remain, you may only need one shade or select from two shades when cavity walls are lacking.



Brilliant aesthetics

Thanks to a reduced number of shades that blend in seamlessly, you are able to create beautiful restorations with minimal effort.

Convenient, stress-free handling

Offering easy sculptability, non-stickiness and a long working time, the composite works effortlessly.

Convincing long-term performance

A well-balanced composition enables you to polish the surface to high gloss within seconds, low wear and an antagonist-friendly behaviour are a given.

The key to great shade-matching and mechanical properties

Proprietary Light Diffusion Technology makes CLEARFIL MAJESTY™ ES-2 Universal blend in seamlessly with the surrounding tooth structure. The optimal balance between submicron fillers, filler load, resin matrix and proprietary silane technology is responsible for a balanced combination of mechanical and optical properties.

CLEARFIL MAJESTY™ ES Flow Universal

Intuitive shade matching goes flowable

This innovative flowable composite, available in two flowabilities, transforms shade matching into an effortless endeavor—no shade guide required! With just two beautifully complementary shades, U and UD, it seamlessly blends with the surrounding tooth structure, empowering you to create beautiful restorations with minimal effort. As it is as strong as many paste-type composites, it opens the door to a wide range of applications.



Effortless results

With only two shades at your disposal and natural blending properties, achieving exceptional outcomes is just a few simple steps away.

Pleasant flow behaviour

Tailor the flowability to suit your specific case—choose between Low or Super Low flow options. Both variants ensure easy dispensing and effortless sculpting, making your work a joy.

Broad indication range

Thanks to its mechanical properties that rival those of paste-type composites, this flowable is great for use even in stress-bearing areas, such as the occlusal surface.

Well-balanced shade matching and strength

A clever fusion of enamel-like translucency, dentin-like chroma, and Light-Diffusion Technology allows for stunning shade matches despite the streamlined shade range. Meanwhile, Submicron Filler Technology is the secret behind its impressive strength and polish retention.

PANAVIA™ SA Cement Universal

Streamlined cementation

Embodying the essence of smart solutions, PANAVIA™ SA Cement Universal transforms the cementing process by removing unnecessary steps. There is no need for a separate primer—simply apply the cement and move forward with your restoration. Designed to excel with a variety of restorative materials, including glass ceramics, this cement offers you more confidence in your outcomes.



One-step cement

Designed to bond with zirconia, metal, composite, and glass ceramics, this material eliminates the need for additional primers, making your workflow smoother than ever.

Ease of use

While the product streamlines your process, it also provides easy handling, effortless dispensing, and straightforward excess removal for a hassle-free experience.

Freedom to choose

If you wish to enhance bond strength to tooth structure in specific scenarios, feel free to apply CLEARFIL™ Universal Bond Quick 2 for an extra boost.

The formula for success with fewer steps and high performance

The unique LCSi Monomer in PANAVIA™ SA Cement Universal forms a robust chemical bond with resin composites, porcelain, and silica-type ceramics like lithium disilicate. Meanwhile, the Original MDP Monomer is responsible for a strong chemical adhesion to tooth structure, zirconia, and metal. This smart combination of monomers allows the self-adhesive dual-cure resin cement to deliver a powerful and durable bond—no separate primer required.



Ordering Information

KATANA™ Cleaner

#3970-EU 4.0 ml x 1 bottle

CLEARFIL™ Universal Bond Quick 2

#4042-EU Bottle Refill 5.0 ml x 1 bottle
#4044-EU Bottle Value Pack 5.0 ml x 3 bottles
#4046-EU Unit Dose Standard Pack 0.1 ml tip x 50 tips, applic. brush fine silver x 50 pcs

CLEARFIL MAJESTY™ ES Flow Universal

#4600-EU Low (U) 1 syringe 1.5 ml x 1, needle tip x 15 pcs
#4601-EU Low (UD) 1 syringe 1.5 ml x 1, needle tip x 15 pcs
#4620-EU Super Low (U) 1 syringe 1.5 ml x 1, needle tip x 15 pcs
#4621-EU Super Low (UD) 1 syringe 1.5 ml x 1, needle tip x 15 pcs

CLEARFIL MAJESTY™ ES-2 Universal

#3181-EU Universal (U) 1 syringe 2.0 ml
#3183-EU Universal Light (UL) 1 syringe 2.0 ml
#3184-EU Universal Dark (UD) 1 syringe 2.0 ml
#3182-EU Universal White (UW) 1 syringe 2.0 ml
#3191-EU Universal (U) 20 PLT 0.25g
#3193-EU Universal Light (UL) 20 PLT 0.25g
#3194-EU Universal Dark (UD) 20 PLT 0.25g
#3192-EU Universal White (UW) 20 PLT 0.25g

PANAVIA™ SA Cement Universal

#4202-EU Handmix Universal (A2) 1 syringe 5.0 ml
#4203-EU Handmix White 1 syringe 5.0 ml
#4204-EU Handmix Translucent 1 syringe 5.0 ml
#4212-EU Automix Universal (A2) 1 syringe 8.2g, 20 Mixing tips
#4213-EU Automix White 1 syringe 8.2g, 20 Mixing tips
#4214-EU Automix Translucent 1 syringe 8.2g, 20 Mixing tips



Smarter
Solutions
at **Work**



UE Universal
Excellence



EU Importer
Kuraray Europe GmbH
Philipp-Reis-Strasse 4,
65795 Hattersheim am Main, Germany
Phone +49 (0)69 305 35 835
Fax +49 (0)69 305 98 35 835
www.kuraraynoritake.eu
centralmarketing@kuraray.com

- Before using these products, be sure to read the Instructions for Use supplied with the product.
- The specifications and appearance of the product are subject to change without notice.
- Printed color can be slightly different from actual color.

"CLEARFIL" "PANAVIA" and "CLEARFIL MAJESTY" are trademarks of KURARAY CO., LTD.
"KATANA" is a trademark of NORITAKE CO., LIMITED.



Kuraray Noritake Dental Inc.
1621 Sakazu, Kurashiki, Okayama 710-0801, Japan
Website www.kuraraynoritake.com

CE 0197



01/2025/MKA00730