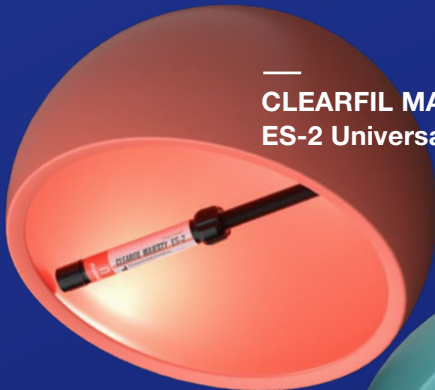


# Universal Excellence

—  
**CLEARFIL MAJESTY™  
ES-2 Universal**



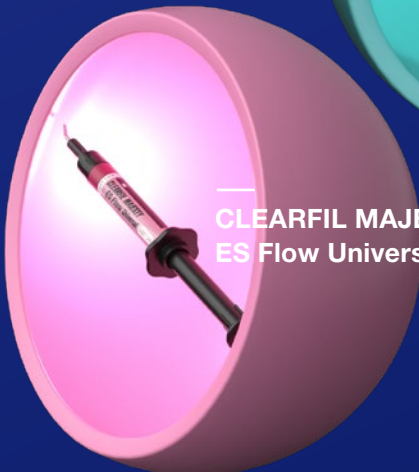
—  
**KATANA™  
Cleaner**



—  
**CLEARFIL™  
Universal Bond Quick 2**



—  
**CLEARFIL MAJESTY™  
ES Flow Universal**



—  
**PANAVIA™  
SA Cement  
Universal**





# Smart With Streamlined Solutions

**Fewer components**  
**Straightforward**  
**Streamlined procedures**

At Kuraray Noritake Dental Inc., we understand the demands of modern dental practices. Balancing complex procedures, tight schedules, and patient needs is no easy task. That is why we have been on a relentless journey to streamline, enhance, and refine every step of your work for decades. Our vision is clear: a world where your materials and tools work seamlessly in your hands, where complexity is minimized, and where you are given enough time to focus on what matters most: the individual desires and needs of every single patient. This is the future of dentistry, and together, we're making it happen.



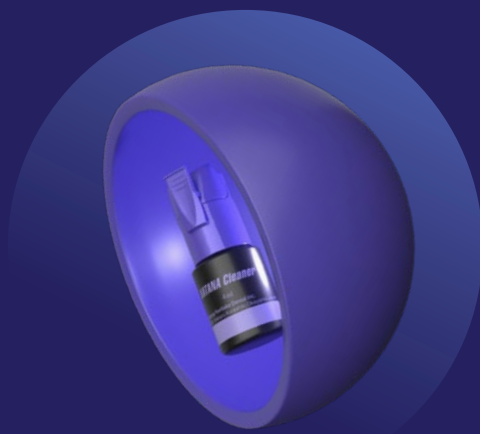


# Less Complexity =

## Why universal products?

We recognize that balancing efficiency with quality is no small feat. That's why we are dedicated to creating solutions that bring both together — seamlessly. Our aligned products, developed with cutting-edge technology, offer intuitive handling and consistently reliable results. The goal? To free you up to focus on what truly matters.

This is Universal Excellence!



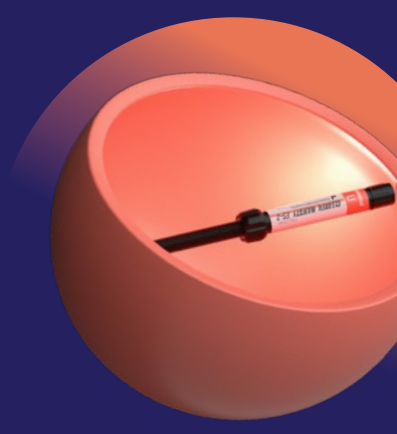
KATANA™  
Cleaner

Cleaning  
effectively



CLEARFIL™  
Universal Bond Quick 2

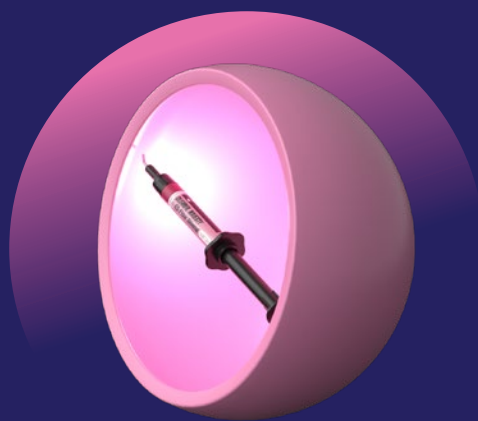
Bonding made  
effortless



CLEARFIL MAJESTY™  
ES-2 Universal

Natural  
single-shade  
restorations

# More Confidence



CLEARFIL MAJESTY™  
ES Flow Universal

**Intuitive shade  
adaptation**



PANA VIA™ SA Cement  
Universal

**Streamlined  
cementation**

# Why universal procedure solutions?

Each of our universal products is thoughtfully designed to integrate seamlessly into your workflow. But it is the synergy between these materials that truly delivers the greatest benefits. That is why our development teams in Japan work in close collaboration — ensuring every product is perfectly aligned.



## **Aligned technology**

Our products are made for each other and designed to work in unison. Freeing your mind of complex procedures and allowing you to focus on patient care.

## **Intuitive and flexible**

Our Universal Excellence products are easy to process and require minimal steps. The individual products are also compatible with other Kuraray Noritake Products. Pick and choose and streamline your daily work using Universal Excellence.

## **Supporting minimally invasive techniques**

We develop solutions that support gentle, defect-oriented treatments—always keeping each patient's well-being at the center of care.

## **Streamlined inventory, Less waste**

With fewer components to stock, your team will manage the inventory with ease, and you will positively impact the environment by cutting down on waste.

# Direct dentistry

## Fewer components, Maximized efficiency

Whether you are restoring an anterior or posterior cavity, we have the right product combination for you. It is tailored to your preferences while aiding your decisions. Here is how our products streamline your restorative procedures:

### Preparing

After tooth preparation, use KATANA™ Cleaner to remove contamination, offering a high cleaning effect with MDP salt.

### Bonding

Apply CLEARFIL™ Universal Bond Quick 2 using your preferred etching technique. A single coat—no waiting—minimizes contamination risk and creates a strong, uniform bond without pooling.

### Filling

For cavity restoration, CLEARFIL MAJESTY™ ES-2 Universal offers a universal paste-type option with a smart shade concept and great handling. Alternatively, consider CLEARFIL MAJESTY™ ES Flow Universal for excellent shade-matching with just two shades. It's excellent mechanical properties match paste-type composite.

### Finishing and polishing

Finishing and polishing restorations from the CLEARFIL MAJESTY™ ES series are quick and straightforward, thanks to advanced filler technology. TWIST™ DIA for Composite is the perfect addition to obtain high gloss.



# Prosthetic dentistry

## Strong bond, Long life

The longevity of indirect restorations with low or limited retention from the preparation relies heavily on the bond quality. Adhesive cementing procedures are the way to go. Even in situations where adhesive cementation is not mandatory it often is still beneficial. Especially if the adhesive procedure is straightforward and easy. Our self-adhesive PANAIA™ SA Cement Universal offers a wide range of benefits in daily cementing procedures.

## Preparing

Prepare as required and take your (digital) impression. Select the desired material for the indirect restoration. For example, KATANA™ Multi-Layered Zirconia which can be used monolithically even in the aesthetic zone whether or not in combination with micro-layering.

## Try-in and cleaning

After trial fitting of the restoration, the surfaces might be contaminated. It is state of the art to start the pre-treatment for adhesive cementation at this point. In case the pretreatment has been done by the technician before try-in, KATANA™ Cleaner offers a good solution to remove contamination from the prostheses. Rub-in the adhesive surface for ten seconds followed by rinsing and drying.

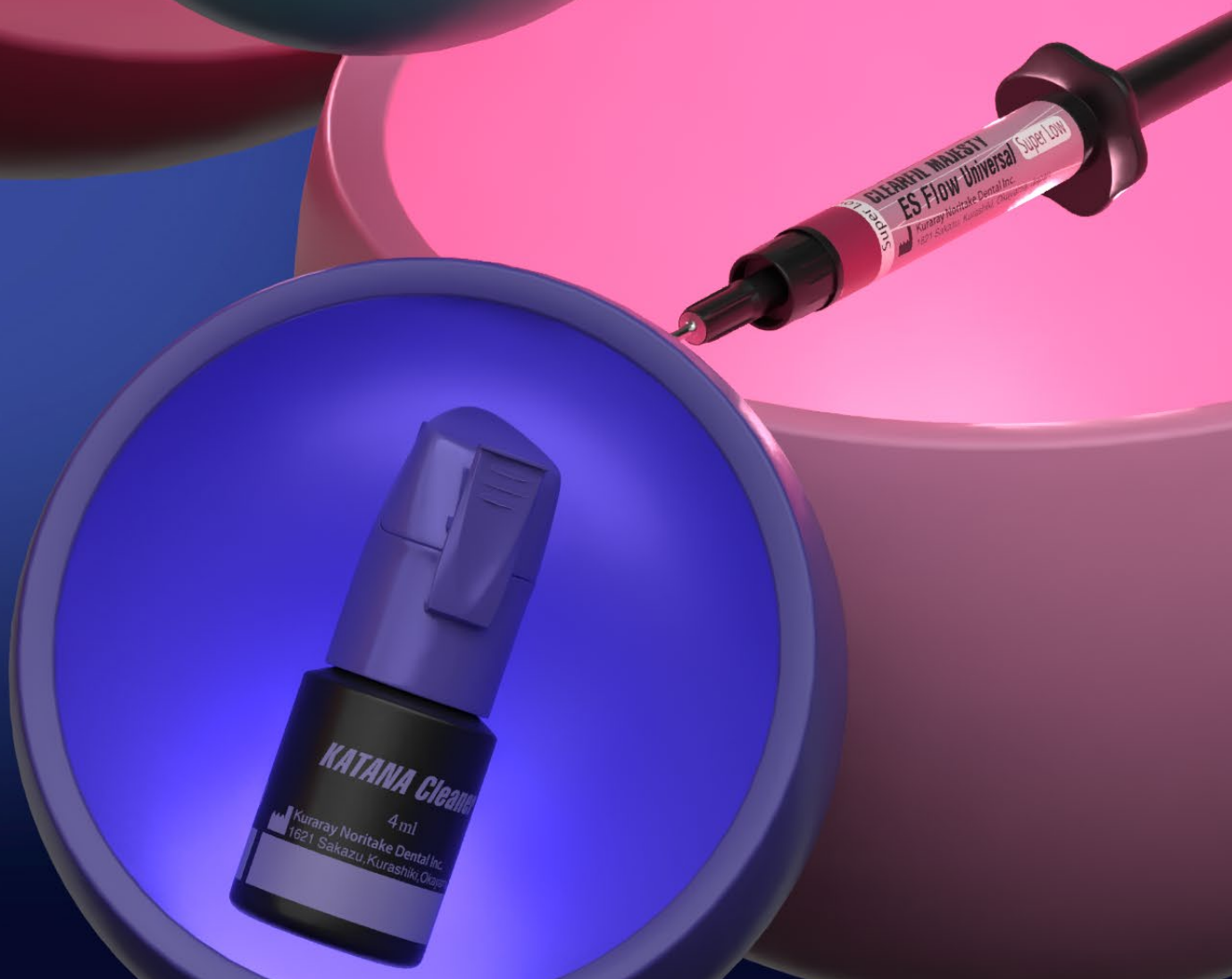
## Cementing

After cleaning, cement your restoration with PANAIA™ SA Cement Universal. This provides a strong bond to zirconium oxide as well as glass ceramics thanks to proprietary LCSi and MDP monomers. No separate primers needed. Use CLEARFIL™ Universal Bond Quick 2 to enhance bond strength to tooth tissue.



Five products: A deep dive

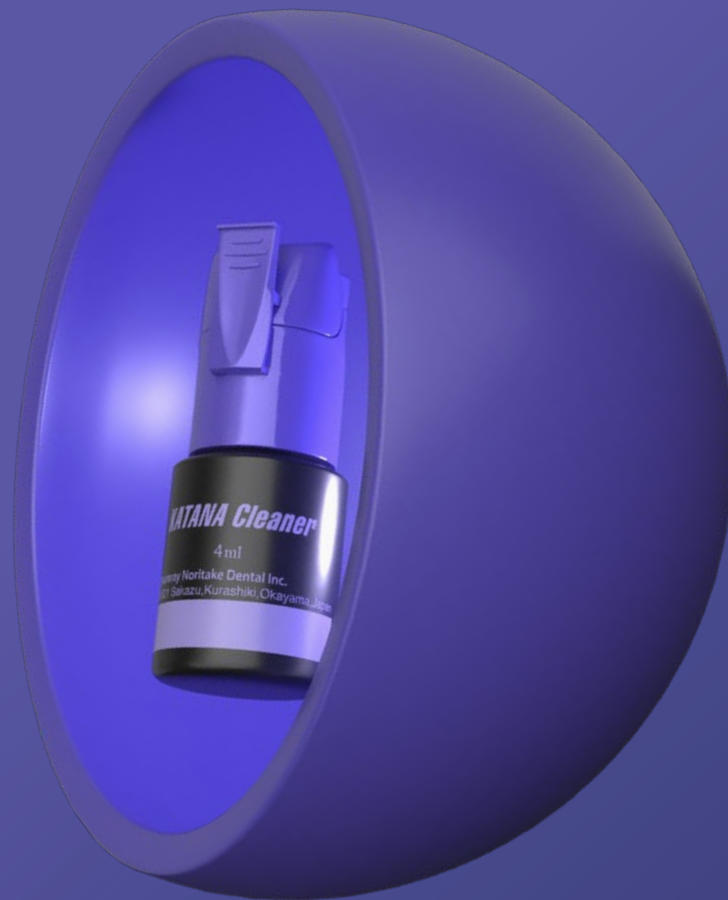




# KATANA™ Cleaner

## Cleaning effectively

A clean surface is essential for optimal bonding. KATANA™ Cleaner is specially formulated to quickly and effectively eliminate contaminants from both tooth surfaces and restorations. Its surface-active MDP salt, derived from the original MDP, works in just 10 seconds of rubbing to restore a pristine, high-energy bonding surface. The quickest way to promote a strong reliable bond.



## Quick and effective

Use KATANA™ Cleaner whenever you are in need of a simple, fast cleaning process that prepares your surface for bonding or cementation. Simply apply and rub for 10 seconds, rinse and dry and your surface is ready for cementation.

## Intra- and extra-oral use

In contrast to other cleaners, KATANA™ Cleaner has a pH value of 4.5 which allows usage not only extra-orally but also intra-orally.

## Versatile across substrates

Whether cleaning tooth surfaces or restorative materials, KATANA™ Cleaner supports a dependable bond.

## The key component enabling a high cleaning effect

KATANA™ Cleaner contains MDP salt, which is based on 10-Methacryloyloxydecyl Dihydrogen Phosphate. Applied to the contaminated surface, it cleans your surface dependably and efficiently. With a quick and easy procedure KATANA™ Cleaner reinstates optimal bonding conditions on the tooth and the restoration.



# CLEARFIL™ Universal Bond Quick 2

## The Everything Bond

Designed to enhance your workflow, CLEARFIL™ Universal Bond Quick 2 provides robust performance across a variety of clinical situations. This modern universal one-step adhesive is at the heart of the Universal Excellence portfolio. It is extremely fast and easy to use. Rub in, dry and cure. Use it for direct and indirect adhesive procedures. In combination with light- and dual-curing resin-based materials.



## Fast procedure

With no waiting time, application is quick and streamlines the procedure.

## Consistently strong and durable bond

Utilizing Advanced Monomer Technology, the adhesive creates an increased bond to enamel, dentin and composite, providing for long-lasting restorations.

## Enhanced flowability

Enhanced flowability creates a thin, uniform bonding layer. This minimizes the risk of pooling and maintains the precise morphology of the preparation.

## The secret behind speed, dependability and versatility Advanced Monomer Technology

**Original MDP Monomer** Responsible for a strong and durable bond to hydroxyapatite and a wide range of restorative materials

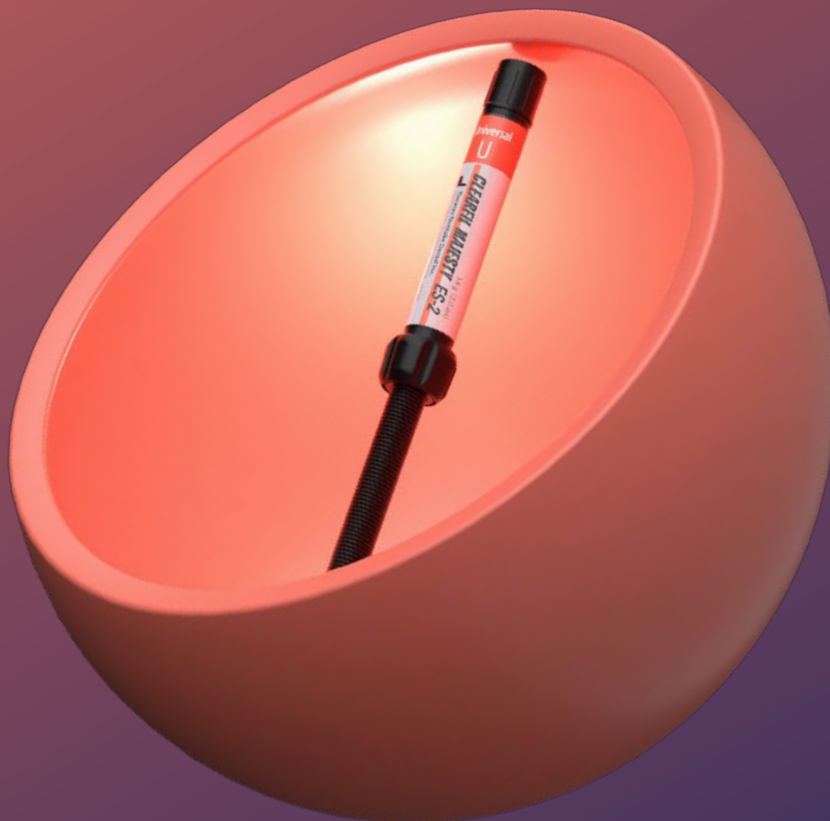
**Amide Monomer** Allowing for rapid penetration into the tooth structure and forming a stable, hydrophobic cross-linked network during polymerization

**Urethane Tetra Methacrylate (UTMA)** Monomer establishing a particularly thin, strong and stable bonding layer, improve the strength of the bonding layer itself. This results in an increased resistance to shrinkage forces.

# CLEARFIL MAJESTY™ ES-2 Universal

**Elevating  
single-shade  
restorations**

CLEARFIL MAJESTY ES-2 Universal was developed to skip shade selection and enhance clinical efficiency without compromising aesthetic outcomes. The line-up consists of only three shades. Improved Light Diffusion technology allows for the composite to blend with the tooth structure naturally, reducing your choices and increasing confidence in a successful outcome.



## Simplified workflow

Thanks to a reduced number of shades, you are able to create beautiful restorations with minimal effort.

## Effortless handling

Offering easy sculptability, non-stickiness and a long working time, the composite works effortlessly.

## Durable performance

With most direct composites placed in the posterior region, performance matters. CLEARFIL MAJESTY™ ES-2 Universal offers excellent wear resistance, low shrinkage stress, and natural optical integration. It polishes easily and maintains a high-gloss, enamel-like finish, even after prolonged brushing.

## The key to great shade-matching and mechanical properties

Proprietary Light Diffusion Technology makes CLEARFIL MAJESTY™ ES-2 Universal blend in seamlessly with the surrounding tooth structure. The optimal balance between submicron fillers, filler load, resin matrix and proprietary silane technology is responsible for a balanced combination of mechanical and optical properties.

# CLEARFIL MAJESTY™ ES Flow Universal

**Intuitive shade  
matching goes  
flowable**

This innovative flowable composite, available in two flowabilities, transforms shade matching into an effortless endeavor—no shade guide required! With just two beautifully complementary shades, U and UD, it seamlessly blends with the surrounding tooth structure, empowering you to create beautiful restorations with minimal effort. It's many features and benefits opens the door to a wide range of applications.





## Effortless results

With only two shades at your disposal and natural blending properties, achieving exceptional outcomes is just a few simple steps away.

## Pleasant flow behaviour

Tailor the flowability to suit your specific case—choose between Low or Super Low flow options. Both variants ensure easy dispensing and effortless sculpting, making your work a joy.

## Broad indication range

Thanks to its mechanical properties that rival those of paste-type composites, this flowable is great for use even in stress-bearing areas, such as the occlusal surface.

## Well-balanced shade matching and strength

A clever fusion of enamel-like translucency, dentin-like chroma, and Light-Diffusion Technology allows for stunning shade matches despite the streamlined shade range. Meanwhile, Submicron Filler Technology is the secret behind its impressive strength and polish retention.

# PANAVIA™ SA Cement Universal

## Streamlined cementation

Embodying the essence of smart solutions, PANAVIA™ SA Cement Universal transforms the cementing process by removing unnecessary steps. There is no need for a separate primer—simply apply the cement and move forward with your restoration. Designed to excel with a variety of restorative materials, including glass ceramics, this cement offers you more confidence in your outcomes.



## One-step cement

Designed to bond with zirconia, metal, composite, and glass ceramics, this material eliminates the need for additional primers, making your workflow smoother than ever.

## Ease of use

While the product streamlines your process, it also provides easy handling, effortless dispensing, and straightforward excess removal for a hassle-free experience.

## Freedom to choose

If you wish to enhance bond strength to tooth structure in specific scenarios, feel free to apply CLEARFIL™ Universal Bond Quick 2 for an extra boost.

## The formula for success with fewer steps and high performance

The unique LCSi Monomer in PANA VIA™ SA Cement Universal forms a robust chemical bond with resin composites, porcelain, and silica-type ceramics like lithium disilicate. Meanwhile, the Original MDP Monomer is responsible for a strong chemical adhesion to tooth structure, zirconia, and metal. This smart combination of monomers allows the self-adhesive dual-cure resin cement to deliver a powerful and durable bond—no separate primer required.



# Ordering Information

## **KATANA™ Cleaner**

#3970-EU 4.0 ml x 1 bottle

## **CLEARFIL™ Universal Bond Quick 2**

#4042-EU Bottle Refill 5.0 ml x 1 bottle

#4044-EU Bottle Value Pack 5.0 ml x 3 bottles

#4046-EU Unit Dose Standard Pack 0.1 ml Unit Dose x 50, applic. brush fine silver x 50 pcs

## **CLEARFIL MAJESTY™ ES Flow Universal**

#4600-EU Low (U) 1 syringe 1.5 ml, 15 needle tips

#4601-EU Low (UD) 1 syringe 1.5 ml, 15 needle tips

#4620-EU Super Low (U) 1 syringe 1.5 ml, 15 needle tips

#4621-EU Super Low (UD) 1 syringe 1.5 ml, 15 needle tips

## **CLEARFIL MAJESTY™ ES-2 Universal**

#3181-EU Universal (U) 1 syringe 2.0 ml

#3183-EU Universal Light (UL) 1 syringe 2.0 ml

#3184-EU Universal Dark (UD) 1 syringe 2.0 ml

#3182-EU Universal White (UW) 1 syringe 2.0 ml

#3191-EU Universal (U) 20 PLT's 0.25 g

#3193-EU Universal Light (UL) 20 PLT's 0.25 g

#3194-EU Universal Dark (UD) 20 PLT's 0.25 g

#3192-EU Universal White (UW) 20 PLT's 0.25 g

## **PANAVIA™ SA Cement Universal**

#4202-EU Handmix Universal (A2) 1 syringe 5.0 ml

#4203-EU Handmix White 1 syringe 5.0 ml

#4204-EU Handmix Translucent 1 syringe 5.0 ml

#4212-EU Automix Universal (A2) 1 syringe 8.2 g, 20 Mixing tips

#4213-EU Automix White 1 syringe 8.2 g, 20 Mixing tips

#4214-EU Automix Translucent 1 syringe 8.2 g, 20 Mixing tips









**Smarter  
Solutions  
at Work**



**UE** Universal  
Excellence

Your contact

**Kuraray Europe Benelux,  
Nordics, Baltics, UK & Ireland**

Margadantstraat 20, 1976 DN IJmuiden, The Netherlands  
PO-box 299, 1970 AG IJmuiden, The Netherlands  
info@ukireland@kuraray.com  
Website [www.kuraraynoritake.eu](http://www.kuraraynoritake.eu)



EU Importeur

**Kuraray Europe GmbH**

Philipp-Reis-Strasse 4,  
65795 Hattersheim am Main, Germany  
Phone +49 (0)69 305 35 835  
Fax +49 (0)69 305 98 35 835  
[www.kuraraynoritake.eu](http://www.kuraraynoritake.eu)  
[centralmarketing@kuraray.com](mailto:centralmarketing@kuraray.com)

- Before using these products, be sure to read the Instructions for Use supplied with the product.
- The specifications and appearance of the product are subject to change without notice.
- Printed color can be slightly different from actual color.

"CLEARFIL" "PANAVIA" and "CLEARFIL MAJESTY" are trademarks of KURARAY CO., LTD.  
"KATANA" is a trademark of NORITAKE CO., LIMITED.



**Kuraray Noritake Dental Inc.**  
1621 Sakazu, Kurashiki, Okayama 710-0801, Japan  
Website [www.kuraraynoritake.com](http://www.kuraraynoritake.com)

**CE** 0197



01/2025/MKA00730