

Complementary Products



Durable and Reliable

CLEARFIL PHOTO CORE and CLEARFIL CORE have been especially developed for solid and durable core build ups. Both high performance composites by Kuraray convince with optimal compressive, tensile and bending strength that originate from their high filler content. Additionally, they provide extremely little polymerisation shrinkage as the basis of the durability of the restoration.



PANAVIA F is a dual-curing resin cement that releases fluoride ions and adheres directly to cut enamel, dentine, composites, porcelain and dental metals. PANAVIA F was developed specifically for universal cementation of inlays, onlays, crowns, bridges and posts made of metal, porcelain or composites. The self-etching ED PRIMER allows careful preparation of cut enamel and dentine in one process step. The etching with acidic agents and rinsing are no longer necessary, putting away the risks of eventual post-operative sensibilities. The anaerobe curing properties of PANAVIA F provide longer time for work and insertion. PANAVIA F is suited for nearly all indications. Its available in four different shades: EX (white), TC (tooth colour), OP (opaque) and LIGHT.

Product Features

- Core build up matrices made of anti-allergic, neutral polyethylene
- Six different sizes
- Easy adaptation
- Transparent material also suited for use in combination with light-curing composites
- Basic kit with six different sizes, ten pieces in each size
- Refill packages for every size with ten matrices each

Contents

- # 991 EU Intro Kit
1 pc of size 1, 2 pcs of size 2, 2pcs of size 3, 2 pcs of size 4, 2 pcs of size 5, 1 pc of size 6.
- # 992 EU Full Assortment
60 pcs. in 10 each size No 1, 2, 3, 4, 5, 6

Sizes available

- # 993 EU Refill Size 1 10pcs
- # 994 EU Refill Size 2 10pcs
- # 995 EU Refill Size 3 10pcs
- # 996 EU Refill Size 4 10pcs
- # 997 EU Refill Size 5 10pcs
- # 998 EU Refill Size 6 10pcs



QUALITY, RELIABILITY AND EXPERIENCE

join in the system components for CORE BUILD UPS. With CLEARFIL CORE BUILD UPS and the high performance products of Kuraray, a convenient and reliable restoration of all core build ups including post cementation is now possible in just a few minutes.

CLEARFIL CORE BUILD UPS are suited for use in all core build up indications. The construction opens the gates to a new dimension of flexibility and presents a complete range of applications.

NOTE: Please read CLEARFIL CORE BUILD UPS instructions for use thoroughly before using the product. CLEARFIL is a trade mark of Kuraray Co., Ltd. All information contained herein is provided in good faith and without warranty. Kuraray Co., Ltd. will replace any product that is proved to be defective. Neither Kuraray Co., Ltd. nor the distributor accepts liability for any loss or damage, direct, consequential or special, arising out of the application or use of the material to use these products. Before using, the user will determine the suitability of the products for the intended use and the user assumes all risk and liability whatsoever in connection therewith. 991 EU-GB 03.01

Perfect Shape

Kuraray CORE BUILD UPS are made of transparent polyethylene – a durable, non-allergic material that provides maximum flexibility.

The use of these matrices allows construction of a direct core build up where incremental layering is no longer necessary. At the same time, they prevent the contact of related teeth to the build up material. The soft core build ups are easily trimmed into the desired form for each individual application.

CLEARFIL CORE BUILD UPS have a core taper of 12,5 degrees, the ideal starting point for a time saving further preparation. The specific form allows optimal compression of composites, thus minimising the possibility of porosities significantly. KURARAY CORE BUILD UPS are suited for applications in the sub-gingival area without any problems.



Versatility through different sizes

The basic kit CLEARFIL CORE BUILD UPS contains six different sizes, each of ten matrices – covering the size range from incisor to molar teeth. Thus the dentist can choose the equivalent size for all preparations on anterior and posterior teeth. Also available are refill packages for each size with ten matrices.



Easy treatment in just one session

CLEARFIL CORE BUILD UPS complement the application range of the efficient Kuraray products for durable and reliable restorations, like PANAVIA F, CLEARFIL PHOTO CORE or CLEARFIL CORE composites that were especially designed for construction of core build ups. The use of CORE BUILD UPS combined with these clinically proven products make way for a perfect, solid build up in just one session: saving time and process steps and allowing the dentist to work even more efficiently.



1.) Post and tooth structure as substructure.



2.) Kuraray CORE BUILD UP form is filled with CLEARFIL CORE.



3.) Complete Core build up is chemically polymerized. No increments needed.



4.) Kuraray CORE BUILD UP is removed.



5.) Core build up cuts like dentin and can be easily prepared immediately.



6.) Core build up is finished as usual.

Clinical Procedures

With PANAVIA F and its self-etching ED PRIMER, all available posts (composite, fibre glass, carbon, (non-) precious metals, titanium) can be cemented durable and safely (Pic. 1).

Possible caries lesions are detected and removed with help of CARIES DETECTOR (Pic. 2).

Depending on the individual situation of each patient, the soft material of the CORE BUILD UP matrix can easily be trimmed with scissors (Pic. 3) and be adjusted to achieve a perfect cervical fit.

After the time-saving conditioning of the root canal with ED PRIMER (Pic. 4), the mixed cement is applied to the adjusted post (Pic. 5) and inserted into the root canal.

While the cement in the root canal is polymerised due to its anaerobic curing properties after 60 seconds already, the excess of the material retains its original creamy consistence and thus functions as a bonding agent for the following composite. An additional bonding procedure is not necessary (Pic. 6).

Afterwards, the matrix is filled with CLEARFIL PHOTO CORE and placed on the remaining core or post. Excess is removed easily (Pic. 7).

After just 40 seconds of light curing, the material is completely cured to a depth of 7 mm (Pic. 8).

Immediately after polymerisation and removal of the matrix (Pic. 9), the build up construction can be prepared (Pic. 10).



Picture 1



Picture 2



Picture 3



Picture 4



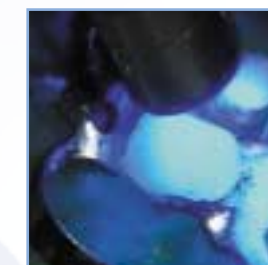
Picture 5



Picture 6



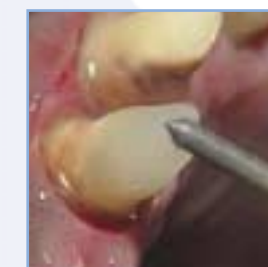
Picture 7



Picture 8



Picture 9



Picture 10