

# MASTERY MEETS SCIENCE FOR DAILY EXCELLENCE

## CLEARFIL MAJESTY™ ES Composite Family

### CLEARFIL MAJESTY™ ES Flow

Ultimate versatility in flow and  
shade selection

### CLEARFIL MAJESTY™ ES Flow Universal

Intuitive shade matching with a  
strong flowable

### CLEARFIL MAJESTY™ ES-2 Classic and Premium

Made for classical layering  
procedures

### CLEARFIL MAJESTY™ ES-2 Universal

Intelligent simplification with a  
smart shade concept



Modern restorative treatment demands minimal invasiveness and brilliant aesthetics. In many clinical situations, these demands can be fulfilled with direct composite restorations. In this context, dentists often consider material choice and technique selection the most important decisions that will determine how efficient, error-proof and successful the procedure will be.

The resin composite portfolio and complementary products for etching, bonding and polishing offered by Kuraray Noritake Dental Inc. are designed to facilitate efficient and successful treatments with their specific handling characteristics, while offering the mechanical properties needed for long-term success. Together, the innovative solutions provide everything required to achieve the best results using a variety of techniques, from single-shade smart-matching to multi-layering, index techniques and flowable injection.

This brochure gives an overview of the most popular products from the family of CLEARFIL™ composites, summarising the reasons to choose them and demonstrating techniques to use them in the most valuable way.



# IMPORTANT TECHNOLOGIES

CLEARFIL MAJESTY™ ES Composites contain a number of advanced technologies that provide excellent mechanical, handling and optical properties. Developed by Kuraray Noritake Dental Inc., these technologies have been precisely adjusted to the needs and particularities of each product.

## LIGHT DIFFUSION TECHNOLOGY

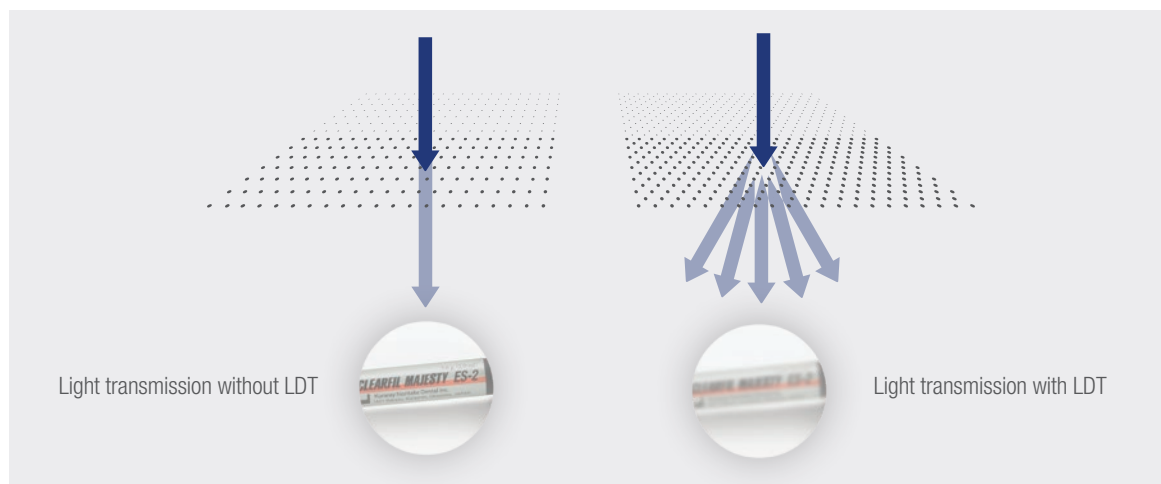
Achieving the desired invisible transition from composite restoration to tooth structure in direct restorations can be challenging. Proprietary Light Diffusion Technology from Kuraray Noritake Dental Inc. results in restorations that distort light in a similar way to dental tissue. As a consequence, the materials equipped with this technology integrate easily and naturally into the surrounding tooth structure. Whether you choose CLEARFIL MAJESTY™ ES Flow (Universal) or CLEARFIL MAJESTY™ ES-2 Universal, Premium, or Classic, these materials are designed to help your restorations blend with the surrounding tooth structure, aiming for simple, attractive outcomes and long-term satisfaction.

## SUBMICRON FILLER TECHNOLOGY

A lifelike appearance of composite restorations is not only dependent on outstanding shade blending properties, but also on a natural surface gloss and long-term polish retention. Kuraray Medical Inc. uses submicron fillers so small that light reflections continue to show a natural effect, even over time. This leads to a high gloss level and long-term polish retention of restorations produced with CLEARFIL MAJESTY™ ES Flow Composites.

## SILANE TECHNOLOGY

An important factor influencing the mechanical properties of resin composites is their filler load. The higher the load, the better the surface quality, mechanical strength and durability, and the lower the polymerisation shrinkage. If the fillers are not silanised using high quality silane, the filler load may impair handling properties. Exceptional silane technology developed by Kuraray Noritake Dental Inc. provides for an excellent wettability of the fillers contained in CLEARFIL MAJESTY™ ES Composites. The resulting high affinity between fillers and resin matrix leads to excellent handling and, after polymerisation, to a durable join over time, and hence to lasting mechanical and optical properties.





INTUITIVE SHADE MATCHING GOES FLOWABLE

# CLEARFIL MAJESTY™ ES Flow Universal

This innovative flowable composite, available in two flowabilities, transforms shade matching into an effortless endeavour—no shade guide required! With just two complementary shades, U and UD, it seamlessly blends with the surrounding tooth structure, empowering you to create beautiful restorations with minimal effort. As it is as strong as many paste-type composites, it opens the door to a wide range of applications.



# STRONG. UNIVERSAL. FLOWABLE.

## INDICATIONS

- ✓ Direct restorations for all cavity classes, cervical lesions (e.g. root surface caries, v-shape defects), tooth wear and tooth erosion
- ✓ Cavity base/liner
- ✓ Corrections of tooth position and shape
- ✓ Intra-oral repairs of fractured restorations
- ✓ Cementation of ceramic and composite inlays, onlays and veneers with less than 2 mm thickness

## FEATURES & BENEFITS

<b>Simplified shade concept</b>	→ Fewer work steps and reduced hassle of inventory management
<b>Two flowability options with excellent handling</b>	→ Non-sticky composite for a wide range of indications offering easy dispensing and sculpting
<b>High mechanical strength</b>	→ Even suitable for stress-bearing areas (occlusal surfaces)
<b>Easy polishing and long-lasting gloss</b>	→ Time-saving procedure and high aesthetics
<b>Clever syringe design</b>	→ Reduces the risk of air bubbles, no dripping, easy modelling with syringe tip



## TECHNICAL SPECIFICATIONS

	LOW	SUPER LOW
Flexural strength	151	152
Compressive strength	373	374
Filler loading (wt%)	75	78
Filler loading (vol%)	59	60
Radiopacity (% Al)	140	150
Sensitivity to ambient light under 8,000 lux (sec.)*	100	100

\* Data source (Kuraray Noritake Dental Inc.); Test method (ISO 4049).

## AVAILABLE SHADES

- ✓ Colour matching with anterior and posterior restorations
- ✓ Just one shade for all posterior restorations
- ✓ Two shades for all anterior restorations



**U**  
Universal

**UD**  
Universal Dark



THREE VISCOSITIES: THE UNIVERSAL FLOWABLE

# CLEARFIL MAJESTY™ ES Flow

How flowable should a flowable composite be? According to dental practitioners, it depends on the indication – and also on individual preferences. A liner needs to be super-adaptive and highly flowable, while various other applications are best accomplished with a material that offers a lower flowability, or – for example – almost sculptability. That is why CLEARFIL MAJESTY™ ES Flow is available in three different flowabilities, all of which offer solid mechanical properties, easy application, fast polishing and high polish retention.





# RESTORE. REPAIR. CEMENT.

## INDICATIONS

- ✓ Direct restorations, for all cavity classes
- ✓ Cavity base or liner
- ✓ Correction of tooth shape and position
- ✓ Intra-oral repairs of fractured restorations
- ✓ For cementing ceramic and composite inlays, onlays and veneers with less than 2 mm thickness

## FEATURES & BENEFITS

### Clever syringe design



Bubble-free application of the desired amount of composite (no dripping from the syringe tip after use), easy modelling with the tip of the syringe

### Submicron filler technology



Easy polish, high gloss and excellent gloss retention for appealing results that last through time

### Proprietary long carbon chain silane coupling agent (LCSi) for increased filler wettability



Even suitable for stress-bearing areas (occlusal surfaces)

### Easy polishing and long-lasting gloss



High filler load allowing outstanding mechanical properties

### Special light diffusion fillers



Excellent shade adaptation for natural blend-in

# RECOMMENDED APPLICATIONS


## FLOWABILITY



**HIGH**

- ✓ Cavity liner (super adaptive layer)
- ✓ Intra-oral repairs (small chippings and air voids)
- ✓ Resin coat in Immediate Dentin Sealing

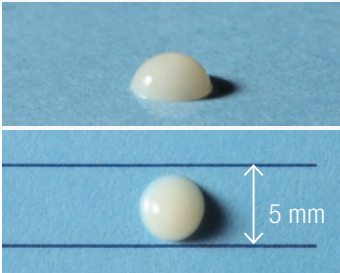

1 min. after dispensing  
(horizontal & vertical)

**LOW**

- ✓ All cavity classes
- ✓ Intra-oral repairs
- ✓ Cavity base
- ✓ Direct veneering
- ✓ Cementing (fragile veneers)\*

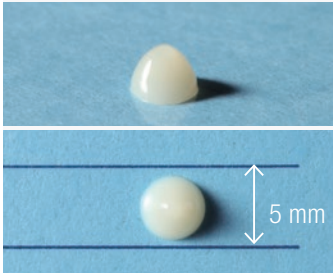
1 min. after dispensing  
(horizontal & vertical)

**SUPER LOW**

- ✓ All cavity classes
- ✓ Direct veneering
- ✓ Cementing\*
- ✓ Tooth position and shape correction

1 min. after dispensing  
(horizontal & vertical)



\* Cementation of ceramic and composite inlays, onlays and veneers with less than 2 mm thickness

## TECHNICAL SPECIFICATIONS

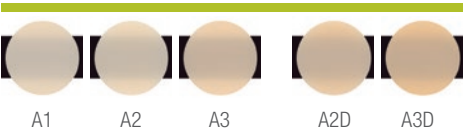
	FLOWABILITY		
	HIGH	LOW	SUPER LOW
Flexural Strength (MPa)	145	151	152
Compressive Strength (MPa)	358	373	374
Filler Loading (w t%)	71	75	78
Filler Loading (vol%)	53	59	60
Radiopacity (% Al)	140	140	140
Sensitivity to ambient light under 8,000 lux (sec.)*	100	100	100

\* Data source (Kuraray Noritake Dental Inc.); Test method (ISO 4049).

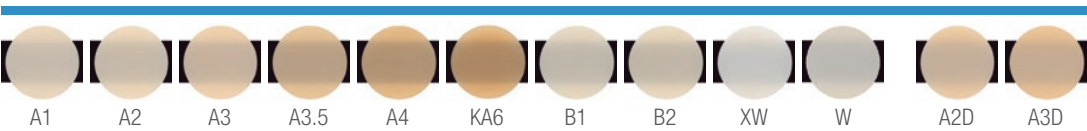


# AVAILABLE SHADES

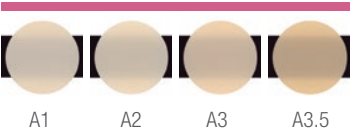
CLEARFIL MAJESTY™ ES Flow High



CLEARFIL MAJESTY™ ES Flow Low



CLEARFIL MAJESTY™ ES Flow Super Low







# TECHNIQUES

## **CLEARFIL MAJESTY™ ES Flow AND CLEARFIL MAJESTY™ ES Flow UNIVERSAL**

No matter whether you opt for CLEARFIL MAJESTY™ ES Flow or for CLEARFIL MAJESTY™ ES Flow Universal: Both products are equally suitable for a wide range of applications and techniques. The techniques described below are particularly popular among users of the flowable composite range offered by Kuraray Noritake Dental Inc.

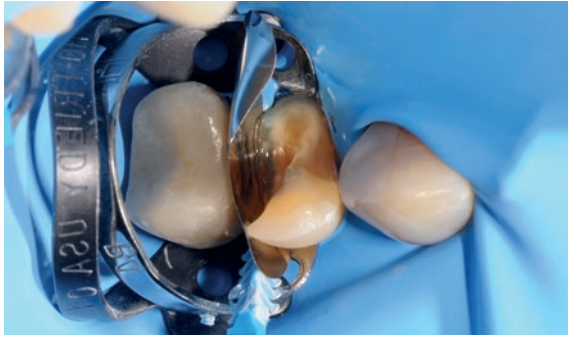


Photo courtesy of Dr. Edoardo Fossati

### **FLOWABLE INJECTION TECHNIQUE**

Complex rehabilitation of worn teeth, shape correction after orthodontic treatment or an increase of the vertical dimension of occlusion: in all those cases, the flowable injection technique (also referred to as injection moulding) is a viable option. This restoration technique, suitable for unprepared or minimally-prepped teeth, is based on a digital or conventional wax-up procedure. This wax-up is used to produce a kind of transparent matrix (e.g. a silicone index), which is then placed in the mouth and filled with flowable composite that is cured through the transparent material.





Photos courtesy of Dr. Max Andrup

### **DEEP MARGIN / PROXIMAL BOX ELEVATION**

The restoration of teeth with proximal defects that are located subgingivally can be challenging, as moisture control is usually difficult in this area. The proximal box elevation technique (also referred to as deep margin elevation) is used to relocate the margin into a supragingival or equigingival position with the aid of either flowable or paste-type resin composite. This facilitates clinical procedures such as impression taking and the application of an adhesive or adhesive composite restoration (including rubber dam placement).

### **IMMEDIATE DENTIN SEALING AND FLOWABLE RESIN COATING**

When dentin is exposed during tooth preparation, it is at high risk of being contaminated by oral fluids, bacteria, temporary cements and the like. Complete removal of the contaminants can be challenging, while incomplete removal may cause post-operative sensitivity, secondary caries or bond failures of the subsequently placed indirect restoration. That is why immediate dentin sealing – the covering and protection of the freshly exposed dentin with a bonding agent – and (whenever an unfilled or lightly filled adhesive is used) subsequent coating with a flowable resin composite is recommended\*.

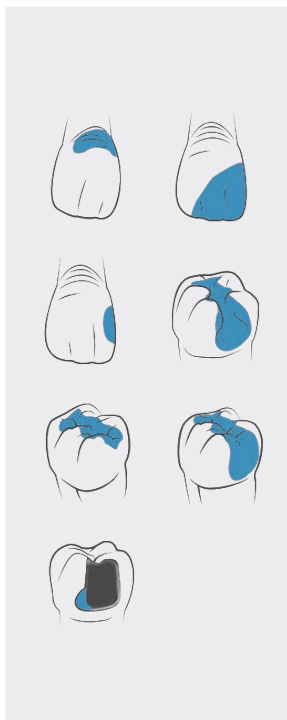
### **REPAIR**

Regardless of material – resin composite, zirconia or lithium disilicate – in many clinical situations, it is possible to repair defective restorations, independent of the restorative material. The recommended procedure is to clean and roughen the surface (sandblasting), followed by the application of a suitable primer (depending on the restorative material), a universal adhesive and a (flowable) composite material. Final high-gloss polishing is important for results that last.



[LEARN MORE](#)





### **SUPER-ADAPTIVE LAYER**

In posterior cavities, it can be difficult to ensure proper adaptation of a paste-type composite to the cavity floor and walls. By first placing a super-adaptive layer of flowable composite, users can be sure of excellent adaptation and a seal that is essential for long-lasting success. The layer on top is placed either in a bulk or in increments, depending on the composite of choice.

### **CLASS I, II, III, IV, V**

Standard posterior, cervical and anterior Class III cavities are often restored with paste-type composite, however a flowable composite is a suitable alternative in many situations, being easily positioned, adapted and modelled. On top, modern versions of flowable composite, like CLEARFIL MAJESTY™ ES Flow and Flow Universal, offer the mechanical properties needed even in load-bearing (occlusal) areas with direct contact to the opposing dentition.

\* de Carvalho MA, Lazari-Carvalho PC, Polonial IF, de Souza JB, Magne P. Significance of immediate dentin sealing and flowable resin coating reinforcement for unfilled/lightly filled adhesive systems. J Esthet Restor Dent. 2021 Jan;33(1):88-98

SMART SHADING CONCEPT: THE UNIVERSAL PASTE-TYPE COMPOSITE

# CLEARFIL MAJESTY™ ES-2 Universal

Is it possible to create single-shade restorations with only one or two shades?

With CLEARFIL MAJESTY™ ES-2 Universal, it is. The Universal shade (U) is most suitable in cases where several cavity walls are still present. This is the case in Class I, II and non-discoloured Class V cavities, for example. In cavities where light easily passes through, i.e. mainly in the anterior region (Class III and IV), there is a need for slightly lower translucency and more light scattering in the material. In these cases, users may choose between UD Universal Dark for teeth darker than A3 and UL Universal Light for lighter teeth. Use of light-blocking composites can be eliminated or reduced when using CLEARFIL MAJESTY™ ES-2 Universal. An additional white shade (UW) is available for cases requiring a high brightness /value. Think of anterior restorations in young patients and when restoring bleached teeth.



# INTUITIVE. INTELLIGENT. UNIVERSAL.

## INDICATIONS

- ✓ Direct restorations for all cavity classes in anterior and posterior teeth
- ✓ Direct veneers
- ✓ Correction of tooth position and tooth shape
- ✓ Intra-oral repair of fractured restorations






## FEATURES & BENEFITS

<b>Simplified shade concept</b>	→ Fewer work steps and reduced hassle of inventory management
<b>Two flowability options with excellent handling</b>	→ Non-sticky composite for a wide range of indications offering easy dispensing and sculpting
<b>High mechanical strength</b>	→ Even suitable for stress-bearing areas (occlusal surfaces)
<b>Easy polishing and long-lasting gloss</b>	→ Time-saving procedure and high aesthetics
<b>Clever syringe design</b>	→ Reduces the risk of air bubbles, no dripping, easy modelling with syringe tip



# AVAILABLE SHADES

- ✓ Universal
- ✓ Universal Light
- ✓ Universal Dark
- ✓ Universal White

SHADE CATEGORY	CAVITY CLASS	SHADE				
		A1 B1, B2	A2 D2, C1	A3 C2, D3	A3.5 B3, B4	A4 C3, C4
Universal	I 	<div>U</div> <div>Universal</div>				
	II 					
	III 	<div>UL</div> <div>Universal Light</div>		<div>UD</div> <div>Universal Dark</div>		
	IV 					
	V 					

For clinical cases in the anterior region that require high lightness/value, we offer a dedicated white shade (UW).

## TECHNICAL SPECIFICATIONS

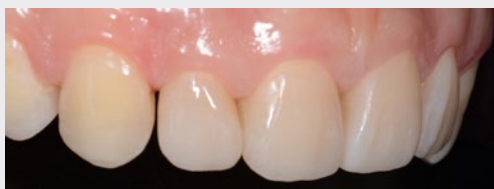
Flexural Strength (MPa)	118
Compressive Strength (MPa)	347
Filler Loading (wt%)	78
Filler Loading (vol%)	66
Curing depth	2.0 mm
Sensitivity to ambient light under 8,000 lux (sec.)*	270 sec

\* Data source (Kuraray Noritake Dental Inc.); Test method (ISO 4049).

# TECHNIQUES

## UNIVERSAL TECHNIQUE

For many situations in the anterior region and for most posterior cavities, a single-shade restorative approach with a universal-opacity composite is a suitable option. A universal shade concept with a limited number of shades further simplifies the procedure by eliminating the need for shade determination using a conventional shade guide. This saves time and effort, while leading to high-quality outcomes.



Before, during and after

## INDEX TECHNIQUE

When restoring worn dentition, it is essential to preserve as much sound tooth structure as possible. The index technique is certainly suited for this purpose: a wax-up is created to plan an increase in the vertical dimension of occlusion. The height and shape / occlusal surface morphology of the restorations are then transferred into the mouth by stamping composite onto the teeth with the aid of a transparent index created on the wax-up. In this way, it is possible to predict function restoration results along with biomechanics and aesthetics.

Photos courtesy of Dr. Riccardo Ammannato



INTUITIVE SHADE DETERMINATION: THE CLASSIC AND PREMIUM SOLUTION

# CLEARFIL MAJESTY™ ES-2 Classic AND Premium

In certain situations, especially when restoring a Class III or Class IV cavity with resin composite, you may want to opt for a dual- or multi-shade layering approach.

This, however, does not have to be complicated. Opting for CLEARFIL MAJESTY™ ES-2 Premium and a selection of Classic shades, you will benefit from easy shade combinations and a simplified, intuitive shade determination system for predictable results.





# LIFELIKE AESTHETIC RESTORATIONS

## INDICATIONS

- ✓ Direct restorations for all cavity classes in anterior and posterior teeth
- ✓ Direct veneers
- ✓ Correction of tooth position and tooth shape (e.g. diastema closure, microdontia, etc.)
- ✓ Intra-oral repairs of fractured restorations

## FEATURES & BENEFITS

<b>Intuitive shade system and an impressive shade coverage: One Premium shade combination covers three VITA™ Classical shades Simplified shade concept</b>	→ Aesthetic outcomes achieved in two steps (1st brightness selection, 2nd hue and colour saturation)
<b>Dual-layering with fixed shade combinations of dentin (opaque) and enamel (semi-translucent) composite</b>	→ Predictable results
<b>Brightness, anatomical layering and light diffusion technology</b>	→ Optimum natural blending
<b>Opalescent Translucent shades</b>	→ Advanced optical appearance
<b>Constant colour appearance before and after polymerisation</b>	→ Precise visual control
<b>Well-balanced paste viscosity</b>	→ Precise modelling and adaptation and stays in place
<b>Excellent stability under ambient light (working time 4.5 min.)</b>	→ Sufficient to add an artistic touch to restorations



# AVAILABLE SHADES

- ✓ CLASSIC  
XW, W, A1, A2, A3, A3.5, A4, KA6, B1, B2, B3, B4, C1, C2, C3, C4, D2, D3
- ✓ PREMIUM  
**Enamel:** XWE, WE, A1E, A2E, A3E, A3.5E, A4E  
**Dentin:** XWD, WD, A1D, A2D, A3D, A3.5D, A4D  
**Translucent:** Clear, Amber, Blue, Gray

## TECHNICAL SPECIFICATIONS

Flexural Strength (MPa)	118
Compressive Strength (MPa)	347
Filler Loading (wt%)	78
Filler Loading (vol%)	66
Curing depth	2.0 mm
Sensitivity to ambient light under 8,000 lux (sec.) *	270 sec

\* Data source (Kuraray Noritake Dental Inc.); Test method (ISO 4049).

# TECHNIQUES

## LIGHT FACING CONCEPT

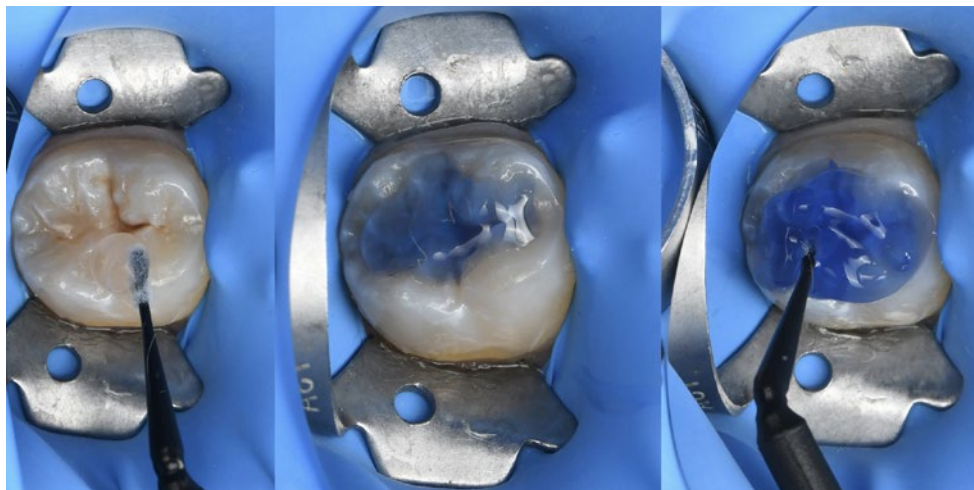
Restoring teeth with a complex inner shade structure and differences in translucency does not have to be difficult. A simple and reproducible way to restore multiple teeth in the anterior region is the light facing concept developed by Steve Meeze. It comprises three steps: planning of the shape via wax-up, build-up of the dentin areas with the correct colour, and application of a light facing in an enamel opacity. The desired outcome is further optimised through texturing and polishing.

## DUAL-SHADE LAYERING TECHNIQUE

Sometimes, a single composite shade and opacity is not sufficient to create a restoration that meets patient expectations. In these cases, a dual-shade layering technique will usually do the trick. Similar to tooth structure and comprising enamel and dentin with their different shade characteristics and levels of translucency, the restoration is built up using a composite of two different opacities and shades. The secret of success is in managing the materials and their thicknesses correctly.

## STAMP TECHNIQUE

No matter whether a Class I or Class II cavity: it can be quite challenging to correctly restore the occlusal anatomy of a posterior tooth. Where the occlusal surface is still intact before treatment, it is possible to copy all the essential information prior to tooth preparation e.g. with flowable composite. The resulting stamp is used after application and before light-curing of the final layer of composite to transfer the copied details onto the newly established occlusal surface.



Photos courtesy of Dr. Michal Jaczewski

## CLEARFIL™ Universal Bond Quick 2 THE UNIVERSAL ADHESIVE

CLEARFIL™ Universal Bond Quick 2 is the innovative universal bonding that works immediately: apply, dry, and cure. No need for waiting, extensive rubbing, or applying several coats. The universal adhesive provides for durable bonding to tooth structure and composite as well as all other direct and indirect restorative materials. Use the product as you like: self-etch, selective-etch, or total-etch. Achieve an optimal result through a simple procedure.

### BENEFITS

- ✓ Simply apply, dry, and cure
- ✓ For all direct and indirect restorations
- ✓ To be used in total-etch, selective-etch, or self-etch modes
- ✓ No need for waiting, extensive rubbing, or applying several coats
- ✓ Durable bonding
- ✓ Compatible with virtually all composite materials, even with dual curable
- ✓ Less time consuming
- ✓ Bottle with flip-top cap for effortless one-handed opening and controlled dosage





# COMPLEMENTARY PRODUCTS FOR DIRECT RESTORATIVE SUCCESS



## **CARIES DETECTOR – THE CARIES REVEALER**

CARIES DETECTOR plays a major role in maintaining pulp vitality and preserving tooth structure by enabling you to clearly distinguish between caries-infected, and caries-affected, remineralisable dentin. As only the irreversibly infected dentin is stained red, you can confidently remove this tissue, while leaving the healthy or remineralisable dentin in place.



## **KATANA™ Cleaner – THE BOND OPTIMISER**

KATANA™ Cleaner removes contamination to optimise adhesive procedures. It has a high cleaning effect due to the surface-active characteristic of MDP Salt. Suitable for intra- and extra-oral use, it is the perfect solution for the cleaning of all bonding surfaces, which are potentially contaminated with saliva or blood for example, after tooth preparation.



## **CLEARFIL™ SE BOND – THE GOLD STANDARD SELF-ETCH ADHESIVE**

CLEARFIL™ SE BOND is Kuraray Noritake Dental Inc.'s high-performance, self-etch two-step adhesive for indications such as the bonding of direct restorations made of light-curing composite resin, cavity sealing and treatment of exposed root surfaces and hypersensitive teeth. It is known for its outstanding bonding and sealing capacity, it is the precision bonding designed for least postoperative sensitivities. Amongst several universities and opinion leaders, CLEARFIL™ SE BOND is deemed to be the Gold Standard.



## **CLEARFIL™ SE BOND 2 – THE GOLD STANDARD MADE FUTURE-PROOF**

The future-proof successor of CLEARFIL™ SE BOND offers an even higher bond strength to dentin and an extended range of indications, including core build-ups and indirect restorations (in combination with CLEARFIL™ DC Activator). The proven and popular benefits of CLEARFIL™ SE BOND – an outstanding marginal seal with high and durable bonding and low post-operative sensitivity – are offered as well.



## **CLEARFIL™ SE Protect – FOR ANTIBACTERIAL CAVITY CLEANING EFFECT BY MDPB**

Featuring the unique anti-bacterial monomer MDPB, CLEARFIL™ SE Protect exhibits an anti-bacterial cavity-cleansing effect. The two-step self-etch adhesive is indicated as a bonding system for direct restorations and – also suitable for bonding core build-ups and cavity sealings with indirect restorations. The tried and proven system has a high bond strength to enamel and dentin, and releases fluoride.



## **K-ETCHANT Syringe – THE THIXOTROPIC ACID ETCHANT**

K-ETCHANT Syringe contains 35% phosphoric acid and offers thixotropic properties. With the new finer (0.5 mm) 'needle tip', the etchant can be applied with great precision, while thixotropy ensures that it remains exactly where it is applied. This gives you full control over the application.



## **TWIST™ DIA for Composite – THE NATURAL GLOSS CREATOR**

TWIST™ DIA for Composite is indicated for polishing all kinds of composites. The “pre-polisher” creates the final form of the restoration from any angle imaginable. With the “high-shine polisher”, a natural high-gloss result is obtained within seconds. TWIST™ DIA for Composite is autoclavable and thus reusable. The combination of flexible components and diamond particles delivers an unprecedented high-gloss result with each use.

# ORDER INFORMATION

## CLEARFIL MAJESTY™ ES Flow Universal



### CLEARFIL MAJESTY™ ES Flow Universal Low

- #4600-EU Low (U)
- #4601-EU Low (UD)



### CLEARFIL MAJESTY™ ES Flow Universal Super Low

- #4620-EU Super Low (U)
- #4621-EU Super Low (UD)
- 1 syringe 1.5 ml x 1, needle tip x 15 pcs



### CLEARFIL MAJESTY™ ES Flow Needle Tip

- #3331-EU CLEARFIL MAJESTY™ ES Flow Needle Tip (N)
- 20 Needle tips

## CLEARFIL MAJESTY™ ES-2 Universal



### CLEARFIL MAJESTY™ ES-2 Universal SYRINGES

- #3181-EU CLEARFIL MAJESTY™ ES-2 Universal (U)
- #3183-EU CLEARFIL MAJESTY™ ES-2 Universal Light (UL)
- #3184-EU CLEARFIL MAJESTY™ ES-2 Universal Dark (UD)
- #3182-EU CLEARFIL MAJESTY™ ES-2 Universal White (UW)



### CLEARFIL MAJESTY™ ES-2 Universal PLT

- #3191-EU CLEARFIL MAJESTY™ ES-2 Universal (U)
- #3193-EU CLEARFIL MAJESTY™ ES-2 Universal Light (UL)
- #3194-EU CLEARFIL MAJESTY™ ES-2 Universal Dark (UD)
- #3192-EU CLEARFIL MAJESTY™ ES-2 Universal White (UW)

**CLEARFIL MAJESTY™ ES Flow**



**SINGLE PACK CLEARFIL MAJESTY™ ES Flow HIGH**

- #3321-EU CLEARFIL MAJESTY™ ES Flow High (A1)
  - #3322-EU CLEARFIL MAJESTY™ ES Flow High (A2)
  - #3323-EU CLEARFIL MAJESTY™ ES Flow High (A3)
  - #3324-EU CLEARFIL MAJESTY™ ES Flow High (A2D)
  - #3325-EU CLEARFIL MAJESTY™ ES Flow High (A3D)
- 1 Syringe(2.7g/1.5ml) 15 Needle tips



**SINGLE PACK CLEARFIL MAJESTY™ ES Flow LOW**

- #3301-EU CLEARFIL MAJESTY™ ES Flow Low (A1)
  - #3302-EU CLEARFIL MAJESTY™ ES Flow Low (A2)
  - #3303-EU CLEARFIL MAJESTY™ ES Flow Low (A3)
  - #3304-EU CLEARFIL MAJESTY™ ES Flow Low (A3.5)
  - #3305-EU CLEARFIL MAJESTY™ ES Flow Low (A4)
  - #3306-EU CLEARFIL MAJESTY™ ES Flow Low (KA6)
  - #3307-EU CLEARFIL MAJESTY™ ES Flow Low (B1)
  - #3308-EU CLEARFIL MAJESTY™ ES Flow Low (B2)
  - #3309-EU CLEARFIL MAJESTY™ ES Flow Low (XW)
  - #3310-EU CLEARFIL MAJESTY™ ES Flow Low (A2D)
  - #3311-EU CLEARFIL MAJESTY™ ES Flow Low (A3D)
  - #3312-EU CLEARFIL MAJESTY™ ES Flow Low (W)
- 1 Syringe(2.7g/1.5ml) 15 Needle tips



**SINGLE PACK CLEARFIL MAJESTY™ ES Flow SUPER LOW**

- #3341-EU CLEARFIL MAJESTY™ ES Flow Super Low (A1)
  - #3342-EU CLEARFIL MAJESTY™ ES Flow Super Low (A2)
  - #3343-EU CLEARFIL MAJESTY™ ES Flow Super Low (A3)
  - #3344-EU CLEARFIL MAJESTY™ ES Flow Super Low (A3.5)
- 1 Syringe(2.7g/1.5ml) 15 Needle tips



**CLEARFIL MAJESTY™ ES Flow Needle Tip**

- #3331-EU CLEARFIL MAJESTY™ ES Flow Needle Tip (N)
- 20 Needle tips

# ORDER INFORMATION

## CLEARFIL MAJESTY™ ES-2 CLASSIC AND PREMIUM



### #3010-EU SYRINGE PROFESSIONAL KIT

Classic A1, A2, A3, A3.5, Premium A1E, A2E, A3E, A3.5E, A1D, A2D, A3D, A3.5D:

1 syringe per shade (3.6g/2.0ml) + Clear, Amber, Blue, Gray

1 syringe per shade (1.8g/0.9ml) + Shade Guide



### #3100-EU PLT PROFESSIONAL KIT

Classic A1, A2, A3, A3.5, Premium A1E, A2E, A3E, A3.5E, A1D, A2D, A3D, A3.5D,

Clear, Amber, Blue, Gray:

5 tips per shade (0.25g) + Shade Guide



### #3012-EU SYRINGE INTRODUCTORY KIT

Classic A2, Premium A2D, A2E:

1 syringe per shade (1.2g/0.7ml)



### #3102-EU PLT Introductory Kit

Classic A2, Premium A2D, A2E:

5 tips per shade (0.25g)



### #3000-EU SHADE GUIDE

All shades



### #3001-EU SHADE GUIDE COMPACT

A1, A2, A3, A3.5, A4, B1, B2, B3, B4,

C1, C2, C3, C4, D2, D3, XW, W



EU Importer

**Kuraray Europe GmbH**

Philipp-Reis-Strasse 4,  
65795 Hattersheim am Main, Germany

Phone +49 (0)69 305 35 835

Fax +49 (0)69 305 98 35 835

[www.kuraraynoritake.eu](http://www.kuraraynoritake.eu)

[centralmarketing@kuraray.com](mailto:centralmarketing@kuraray.com)

- Before using this product, be sure to read the Instructions for Use supplied with the product.
- The specifications and appearance of the product are subject to change without notice.
- Printed colour can be slightly different from actual colour.

KATANA is a registered trademark or trademark of NORITAKE CO., LIMITED.,  
PANAVIA and CLEARFIL are registered trademarks or trademarks of KURARAY CO., LTD.  
TWIST™ is a trademark of EVE Ernst Vetter GmbH. TWIST™ DIA for Zirconia and TWIST™ DIA for Composite is manufactured by EVE Ernst Vetter GmbH and distributed by Kuraray Europe GmbH.  
VITA™ Classical A1-D4 shade guide is a trademark of VITA Zahnfabrik, Bad Sackingen, Germany



**Kuraray Noritake Dental Inc.**

1621 Sakazu, Kurashiki, Okayama 710-0801, Japan  
Website [www.kuraraynoritake.com](http://www.kuraraynoritake.com)

