

CLEARFIL MAJESTY™ ES FLOW

Superior gloss retention,
now with 3 levels of flowability.



THE ONLY COMPOSITE YOU WILL EVER NEED.

CLEARFIL MAJESTY™ ES Flow

CLEARFIL MAJESTY™ ES Flow universal flowable composite now comes with three levels of flowability adapted to your needs. Delivers easy, durable and aesthetic restorations.

- ✓ superior gloss retention
- ✓ easy to polish
- ✓ durable restorations
- ✓ wide range of indications
- ✓ 3 levels of flowability



3 LEVELS OF FLOWABILITY



Your top award-winner for 4 years in a row, universal flowable composite now comes in 3 different levels of flowability. Adapted to your needs and providing durable, aesthetic and easy restorations.

High

Low

Super Low

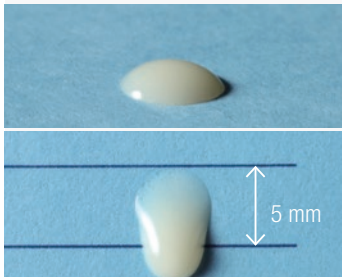
FLOWABILITY



HIGH FLOWABILITY

- ✓ Excellent wettability and adaptation
- ✓ For small cavities
- ✓ As a liner

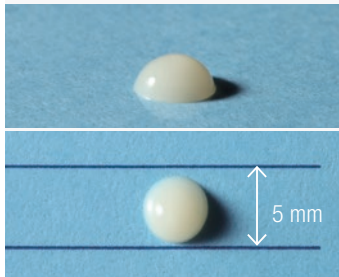
1 min. after dispensing
(horizontal & vertical)



INTERMEDIATE FLOWABILITY

- ✓ For a wide range of anterior and posterior restorations

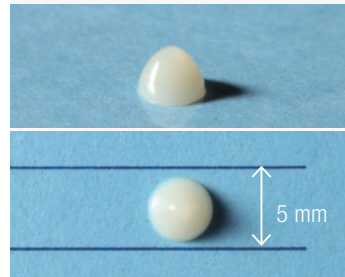
1 min. after dispensing
(horizontal & vertical)



LOW FLOWABILITY

- ✓ Ideal for building posterior cusps and ridges
- ✓ Retains the given shape
- ✓ For class I and V cavities

1 min. after dispensing
(horizontal & vertical)



EXCEPTIONALLY EASY TO POLISH

Gloss after wiping with ethanol¹



CLEARFIL MAJESTY™
ES Flow



Filtek Supreme
Ultra Flowable*



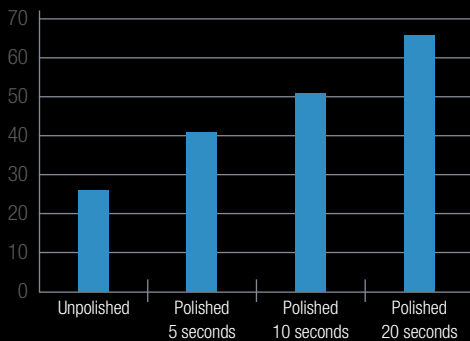
Tetric EvoFlow*

EXCEPTIONALLY EASY TO POLISH WITH NATURAL, INSTANT, LONG-LASTING GLOSS

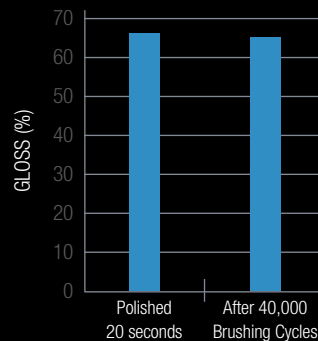
Polish retention is one of the key features required for composite restorations. The filler particles of CLEARFIL MAJESTY™ ES Flow have been designed to produce a high gloss and maintain this gloss over time. CLEARFIL MAJESTY™ ES Flow is extremely easy and fast to polish in

just seconds. Even by just wiping the surface with a gauze or cotton roll soaked in alcohol results in a high level of gloss. Aesthetics are further enhanced by special light diffusion clusters that deliver outstanding color adaptation properties that blend seamlessly with the tooth structure.

GLOSS (%)^{1,2}



TOOTHBRUSH WEAR TEST^{1,2}

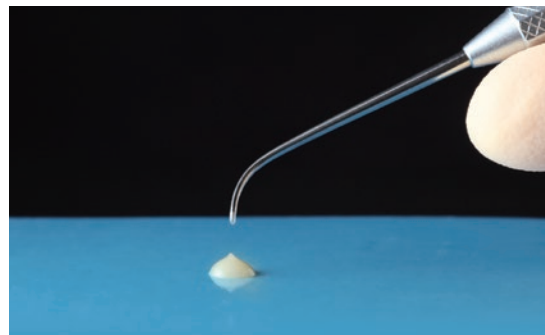
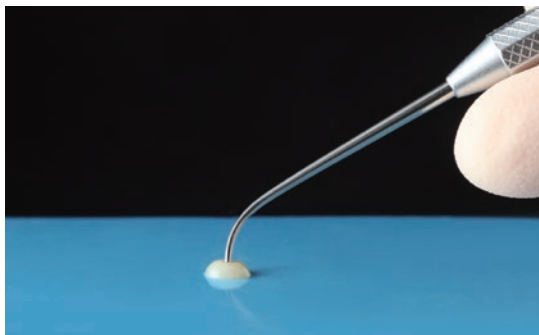


* Not a trademark of Kuraray Noritake Dental Inc. ¹Data source: Kuraray Noritake Dental Inc. ²Test results using CLEARFIL MAJESTY™ ES Flow Low



SUPERIOR EASY HANDLING

Designed with the best handling characteristics in mind. We use a proprietary silane coupling agent to treat the fillers. This and the fact that our composite contains both submicron and cluster fillers (0.18 μm to 3.5 μm), provide for superior handling characteristics to the paste, improving ease of dispensing, handling and sculpting. CLEARFIL MAJESTY™ ES Flow is a non-sticky composite and thanks to the special design of the syringe, bubble free dispensing is the result.

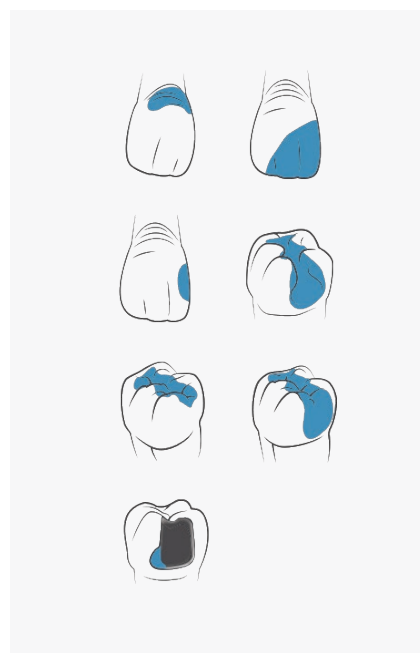


CLEARFIL MAJESTY™ ES Flow Low



WIDE RANGE OF INDICATIONS

- ✓ Direct restorations for all cavity classes, cervical lesions (e.g. root surface caries, v-shape defects), tooth wear and tooth erosion
- ✓ Cavity base/liner
- ✓ Corrections of tooth position and shape
- ✓ Intraoral repairs of fractured restorations
- ✓ Cementation of ceramic and composite inlays, onlays and veneers with less than 2 mm thickness



GREAT MECHANICAL PROPERTIES

Kuraray Noritake Dental's proprietary silane coupling agent allows for high filler loading (up to 78 wt%, 64 vol%) to provide superior mechanical properties making it suitable even for posterior restorations.

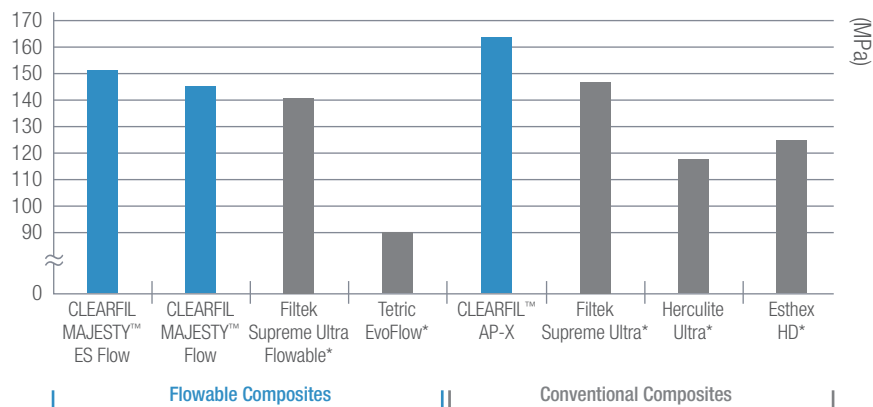
	FLEXURAL STRENGTH	COMPRESSIVE STRENGTH
High	145 MPa	358 MPa
Low	151 MPa	373 MPa
Super Low	152 MPa	374 MPa

According to ISO 4049:2009. Source: Kuraray Noritake Dental Inc.



Case performed with the Low flowability type. Pictures courtesy of Dr. Keiichi Hosaka.

FLEXURAL STRENGTH COMPARISON



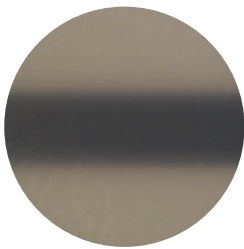
* Not a trademark of Kuraray Noritake Dental Inc.

Test results using CLEARFIL MAJESTY™ ES Flow Low. According to ISO 4049:2009. Source: Kuraray Noritake, Dental Inc.

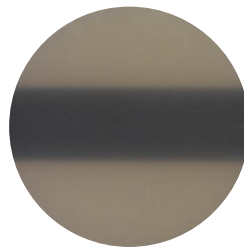
LIGHT DIFFUSION TECHNOLOGY

Light diffusion refers to a material's ability to scatter and reflect light rays in many different angles. Kuraray Noritake Dental's Light Diffusion (LD) technology in composites incorporates light diffusion particle fillers to enhance the aesthetic properties of the material. This gives the ability to diffuse light in all directions, in a way that emulates the natural teeth and resulting in highly aesthetic restoration.

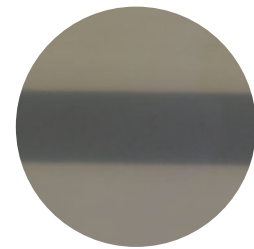
CLEARFIL MAJESTY™ ES Flow faithfully reproduces the diffusive properties of tooth structure. It shows a higher level of light diffusion in the more opaque shades (dentin) and a lower level in the more translucent ones. When put into practice, the end result is simple: this light diffusion is the ultimate "tool" to create a restoration that merges effortlessly with the surrounding natural dentition.



CLEARFIL MAJESTY™ ES Flow
(highest level of light diffusion)



3M ESPE Filtek
Supreme Ultra Flowable*

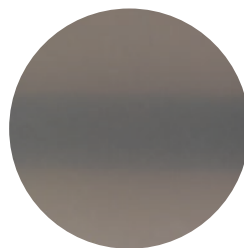


Ivoclar Vivadent
Tetric EvoFlow*

ON PAPER



CLEARFIL MAJESTY™ ES Flow
(highest level of light diffusion)



3M ESPE Filtek
Supreme Ultra Flowable*



Ivoclar Vivadent
Tetric EvoFlow*

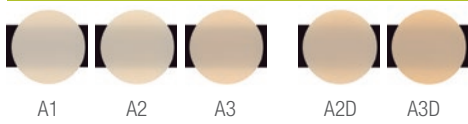
OFF PAPER

*Not a trademark of Kuraray Noritake Dental Inc.

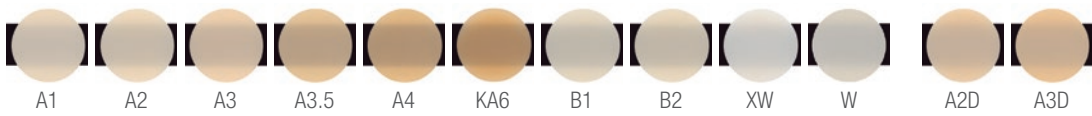


AVAILABLE SHADES

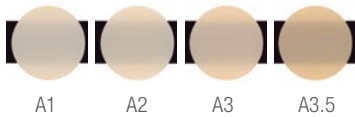
CLEARFIL MAJESTY™ ES Flow High



CLEARFIL MAJESTY™ ES Flow Low



CLEARFIL MAJESTY™ ES Flow Super Low



EASY CLINICAL STEPS



Prepare the cavity.



Apply bonding according to the manufacturer's instructions.



Dispense and Sculpt CLEARFIL MAJESTY™ ES Flow.*



Polish the restoration.

*Case performed with the Low flowability type. Pictures courtesy of Dr. Hirofumi Tashiro.

PRODUCT ASSORTMENT

SINGLE PACK CLEARFIL MAJESTY™ ES Flow High

- #3321-EU CLEARFIL MAJESTY™ ES Flow High (A1)
 - #3322-EU CLEARFIL MAJESTY™ ES Flow High (A2)
 - #3323-EU CLEARFIL MAJESTY™ ES Flow High (A3)
 - #3324-EU CLEARFIL MAJESTY™ ES Flow High (A2D)
 - #3325-EU CLEARFIL MAJESTY™ ES Flow High (A3D)
- 1 Syringe(2.7g/1.5ml) 15 Needle tips



SINGLE PACK CLEARFIL MAJESTY™ ES Flow Low

- #3301-EU CLEARFIL MAJESTY™ ES Flow Low (A1)
 - #3302-EU CLEARFIL MAJESTY™ ES Flow Low (A2)
 - #3303-EU CLEARFIL MAJESTY™ ES Flow Low (A3)
 - #3304-EU CLEARFIL MAJESTY™ ES Flow Low (A3.5)
 - #3305-EU CLEARFIL MAJESTY™ ES Flow Low (A4)
 - #3306-EU CLEARFIL MAJESTY™ ES Flow Low (KA6)
 - #3307-EU CLEARFIL MAJESTY™ ES Flow Low (B1)
 - #3308-EU CLEARFIL MAJESTY™ ES Flow Low (B2)
 - #3309-EU CLEARFIL MAJESTY™ ES Flow Low (XW)
 - #3310-EU CLEARFIL MAJESTY™ ES Flow Low (A2D)
 - #3311-EU CLEARFIL MAJESTY™ ES Flow Low (A3D)
 - #3312-EU CLEARFIL MAJESTY™ ES Flow Low (W)
- 1 Syringe(2.7g/1.5ml) 15 Needle tips



SINGLE PACK CLEARFIL MAJESTY™ ES Flow Super Low

- #3341-EU CLEARFIL MAJESTY™ ES Flow Super Low (A1)
 - #3342-EU CLEARFIL MAJESTY™ ES Flow Super Low (A2)
 - #3343-EU CLEARFIL MAJESTY™ ES Flow Super Low (A3)
 - #3344-EU CLEARFIL MAJESTY™ ES Flow Super Low (A3.5)
- 1 Syringe(2.7g/1.5ml) 15 Needle tips



CLEARFIL MAJESTY™ ES Flow Needle Tip

- #3331-EU CLEARFIL MAJESTY™ ES Flow Needle Tip (N)
- 20 Needle tips







EU Importer

Kuraray Europe GmbH

Philipp-Reis-Strasse 4,
65795 Hattersheim am Main, Germany
Phone +49 (0)69 305 35 835
Fax +49 (0)69 305 98 35 835
www.kuraraynoritake.eu
centralmarketing@kuraray.com

- Before using this product, be sure to read the Instructions for Use supplied with the product.
- The specifications and appearance of the product are subject to change without notice.
- Printed color can be slightly different from actual color.

"CLEARFIL" and "CLEARFIL MAJESTY" are trademarks of KURARAY CO., LTD



Kuraray Noritake Dental Inc.
1621 Sakazu, Kurashiki, Okayama 710-0801, Japan
Website www.kuraraynoritake.com



06/2024 MKA00022