

DETECT. REMOVE. RESTORE.

CARIES DETECTOR:

A precise guide to conservative caries removal



DO YOU BELIEVE

THAT MINIMUM INTERVENTION DENTISTRY IS THE WAY TO GO?

Then, CARIES DETECTOR will make your work much easier!



FACTS BACKING CONSERVATIVE CARIES REMOVAL TECHNIQUES

Cariou dentin has two layers:

- ✓ The outer, decalcified, infected layer that must be removed
- ✓ The inner, partially decalcified, non-infected layer that is remineralizable and should be preserved

CARIES DETECTOR: HOW IT WORKS

By staining the outer, infected dentin scarlet red, but leaving the remineralizable caries-affected and the healthy dentin unstained, **CARIES DETECTOR provides a visible, clinically precise guide to conservative caries removal.**

CARIES DETECTOR may be used in two different ways depending on the size of the cavity:

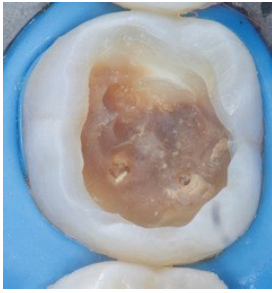
SHALLOW OPEN CAVITY

Apply the product to the cavity area before opening it

DEEP CAVITY WITH LARGE AMOUNTS OF CARIOUS DENTIN

Apply the product after removing the heavily discolored and highly softened dentin, while avoiding careless gross reduction

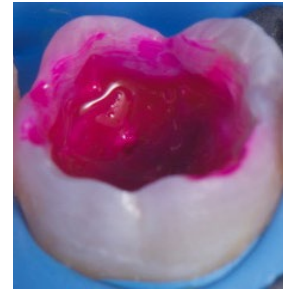
DEEP CAVITY: CLINICAL PROCEDURE



1. Cavity after rubber dam placement, removal of the heavily discolored and highly softened dentin as well as careful washing and drying.



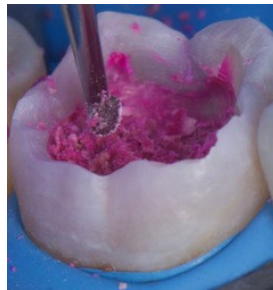
2. One drop of CARIES DETECTOR placed on a disposable brush and applied to the cavity.



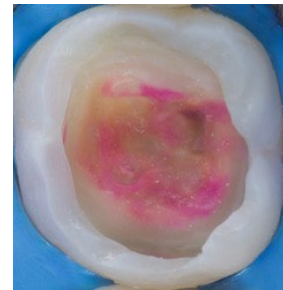
3. Appearance of the tooth during the ten-second waiting time.



4. Appearance of the tooth with stained carious tissue after rinsing with water.



5. Removal of the infected carious dentin, which is stained red, with a low-speed rotary instrument. The operator should carefully avoid cutting the sensitive unstained tissue.



6. Cavity after repeated detection and reduction, ready for the restorative procedure.

Photos courtesy of Dr Tazi

MINIMUM INTERVENTION DENTISTRY

SMART SOLUTIONS FOR THE FOLLOWING STEPS

CARIES DETECTOR is the first step in conservative caries management. As its developer, Kuraray Noritake Dental Inc. offers a whole range of complementary solutions designed to streamline minimally invasive restorative procedures while supporting aesthetics and longevity.

LEARN MORE



PRODUCT INFORMATION

Caries Detector

#220-EU Caries Detector, 1 bottle (6 ml)

COMPLEMENTARY PRODUCTS

SINGLE PACK CLEARFIL MAJESTY™ ES Flow Universal

#4600-EU CLEARFIL MAJESTY™ ES Flow Universal Low (U)
#4601-EU CLEARFIL MAJESTY™ ES Flow Universal Low (UD)
#4620-EU CLEARFIL MAJESTY™ ES Flow Universal Super Low (U)
#4621-EU CLEARFIL MAJESTY™ ES Flow Universal Super Low (UD)
1 Syringe (2.7 g/1.5 ml) 15 Needle tips



SINGLE PACK CLEARFIL MAJESTY™ ES-2 Universal Syringe

#3181-EU CLEARFIL MAJESTY™ ES Flow Universal (U)
#3183-EU CLEARFIL MAJESTY™ ES Flow Universal Light (UL)
#3184-EU CLEARFIL MAJESTY™ ES Flow Universal Dark (UD)
#3182-EU CLEARFIL MAJESTY™ ES Flow Universal White (UW)
1 syringe (2.0 ml/3.6 g)



SINGLE PACK CLEARFIL MAJESTY™ ES-2 Universal PLT

#3191-EU CLEARFIL MAJESTY™ ES Flow Universal (U)
#3193-EU CLEARFIL MAJESTY™ ES Flow Universal Light (UL)
#3194-EU CLEARFIL MAJESTY™ ES Flow Universal Dark (UD)
#3192-EU CLEARFIL MAJESTY™ ES Flow Universal White (UW)
20 PLT (0.25 g)



CLEARFIL MAJESTY™ ES Flow Needle Tip

#3331-EU CLEARFIL MAJESTY™ ES Flow Universal Needle Tip (N)
20 Needle tips



CLEARFIL™ Universal Bond Quick 2

#4046-EU Unit Dose Standard Pack
0.1 ml Unit Dose x 50, applic. brush fine silver x 50 pcs
#4042-EU Bottle REFILL (5 ml)
#4044-EU Bottle VALUE PACK (3 x 5 ml)



EU Importer
Kuraray Europe GmbH
Philipp-Reis-Strasse 4,
65795 Hattersheim am Main, Germany
Phone +49 (0)69 305 35 835
Fax +49 (0)69 305 98 835
www.kuraraynoritake.eu
centralmarketing@kuraray.com

- Before using this product, be sure to read the Instructions for Use supplied with the product.
- The specifications and appearance of the product are subject to change without notice.
- Printed color can be slightly different from actual colour.

"CLEARFIL" and "CLEARFIL MAJESTY" are registered trademarks or trademarks of KURARAY CO., LTD



Kuraray Noritake Dental Inc.
1621 Sakazu, Kurashiki, Okayama 710-0801, Japan
PD59-01 1/2022



10/2025/MKA00740