

## CLEARFIL MAJESTY™ Posterior

CLEARFIL MAJESTY™ Posterior is a composite resin for the restoration of posterior teeth. It is highly loaded, at 92wt%, with an inorganic filler, so that it provides great mechanical strength and extremely low polymerization shrinkage, making it particularly suitable for the filling of posterior teeth. However, due to this high inorganic filler loading, CLEARFIL MAJESTY™ Posterior requires some knack when filling with the paste and polishing the cured resin. This report details some points to be kept in mind when using CLEARFIL MAJESTY™ Posterior in the clinical setting.



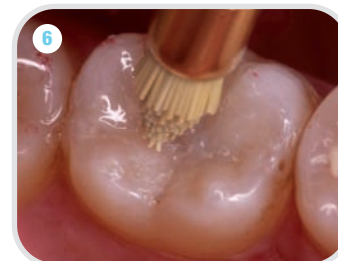
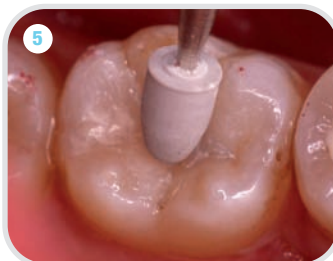
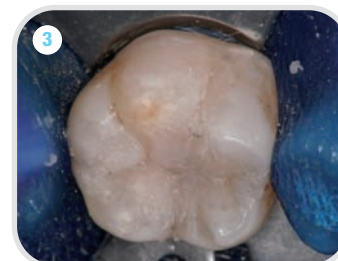
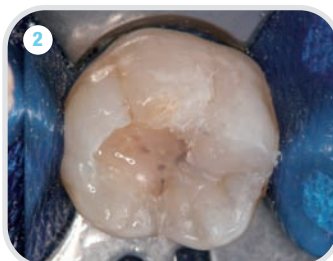
**Dr. Naotake Akimoto**  
Tsurumi University School of Dental Medicine



Before restauration

The patient visits the clinic to receive an esthetic restoration. The lower left molar has been treated with a Class I metal inlay.

- 1 Remove the metal inlay and cement.
- 2 After bonding, apply a layer of a flowable composite resin on the bottom of the cavity. Form cusps one by one by loading CLEARFIL MAJESTY™ Posterior paste into the cavity. After shaping the paste, light cure the resin. It is good practice to smooth any irregularities and the margins of the paste surface using the small brush. This helps reduce the time required for polishing. If filling with the resin takes a lot of time, use caution to prevent premature progress of composite resin polymerization, by turning the focus of the dental light aside.
- 3



- 4 Establish the final contours and anatomy using a carbide bur or a super-fine diamond point.
- 5 Using a rubber point containing diamond running at low speed, completely remove any scores from the surface to make the entire surface smooth. After that, increase the speed of the rubber point slightly and apply it to the restored surface using light pressure to bring out the shine.
- 6 Using a brush containing diamond running at high speed (around 10,000 rpm), polish any pits and fissures. Do not press hard with the brush against the tooth; otherwise the gloss on the tooth can be lost.

\* There are many procedures for filling and polishing the composite resin. The procedure shown above is just an example.



After restauration