



Case A

Direct restorations using light-cured composite resin or compomer

Case B

Cavity sealing as a pretreatment for indirect restorations

Case C

Treatment of hypersensitive and/or exposed root surfaces

Case D

Intraoral repairs of fractured crowns/bridges made of porcelain, hybrid ceramics or composite resin using light-cured composite resin

Case E

Surface treatment of prosthetic appliances made of porcelain, hybrid ceramics and cured composite resin

Case F

Core build-ups using light- or dual-cured composite resin

Case G

Cavity sealing under amalgam restorations



Case A

Direct restorations using light-cured composite resin or compomer



A

Case B

Cavity sealing as a pretreatment for indirect restorations



B

Case C

Treatment of hypersensitive and/or exposed root surfaces



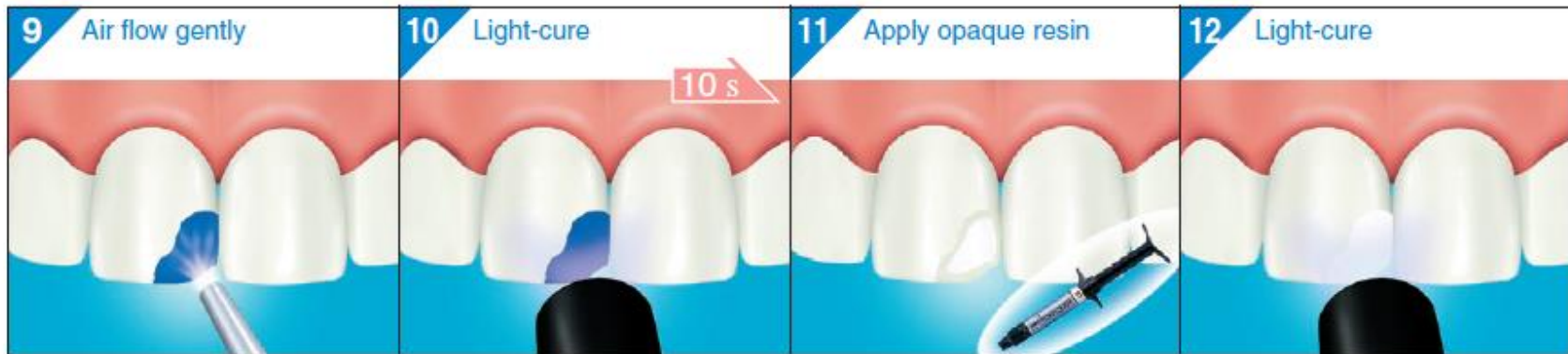
Case D

Intraoral repairs of fractured crowns/bridges made of porcelain, hybrid ceramics or composite resin using light-cured composite resin (1/2)



Case D

Intraoral repairs of fractured crowns/bridges made of porcelain, hybrid ceramics or composite resin using light-cured composite resin (2/2)



Case E

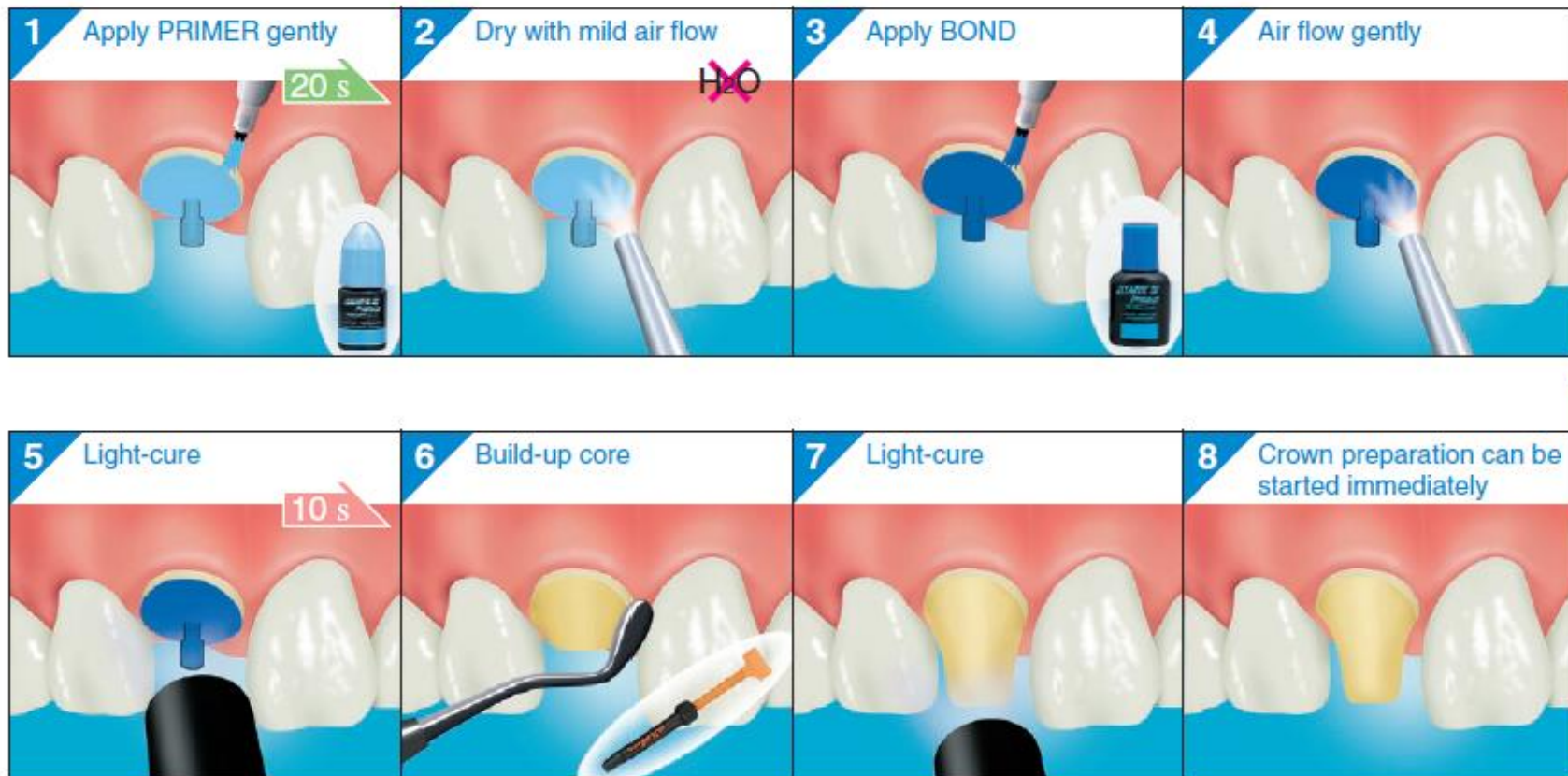
Surface treatment of prosthetic appliances made of porcelain, hybrid ceramics and cured composite resin



E

Case F

Core build-ups using light- or dual-cured composite resin



F

Case G

Cavity sealing under amalgam restorations



G