

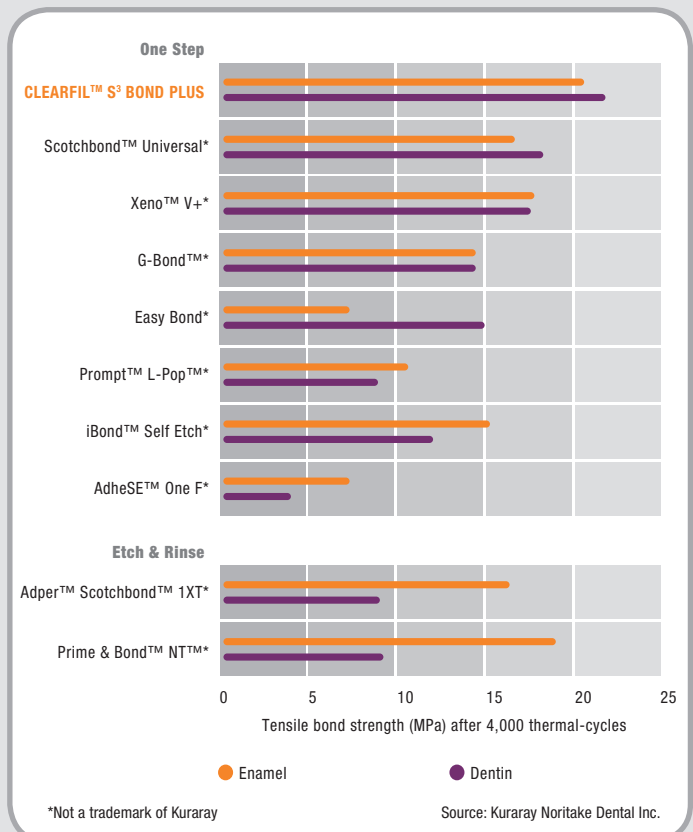
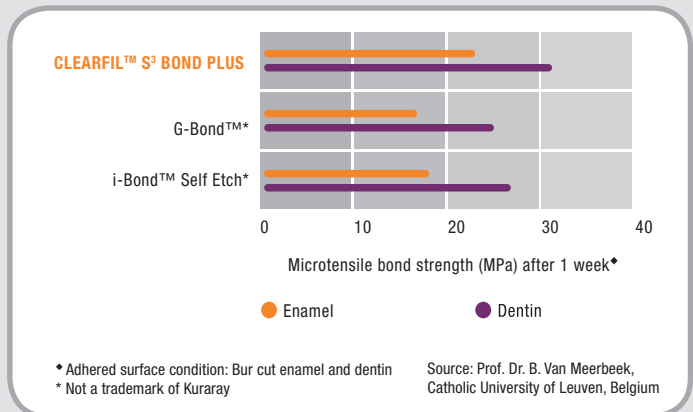
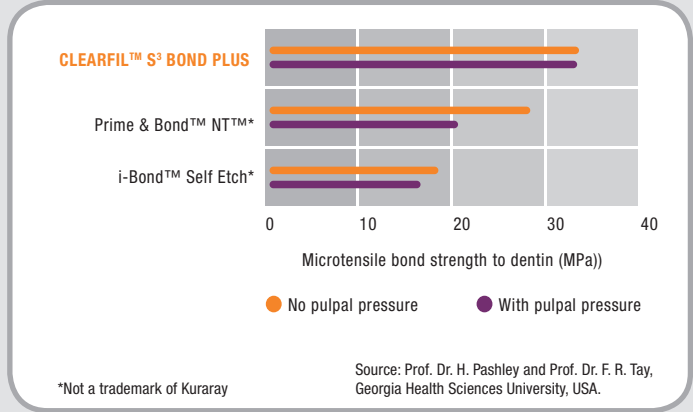
# Substantial scientific results in detail

## Striking bond strength confirmed!

This graph shows the water-sensitivity of self-etching adhesive systems and etch & rinse adhesive. Among the tested adhesives, CLEARFIL™ S<sup>3</sup> BOND PLUS is the only one to show an excellent performance – there was no difference in the bond strength in the absence or presence of simulated pulpal pressure caused by water. While other adhesives lose their bond strength in case of pulpal pressure, CLEARFIL™ S<sup>3</sup> BOND PLUS stays strong and reliable.

The adhesive values of CLEARFIL™ S<sup>3</sup> BOND PLUS are at a new high – setting the standard among one-step adhesives. New research on enamel and dentin after one week prove the remarkable adhesive bond strength of CLEARFIL™ S<sup>3</sup> BOND PLUS in comparison to other one-step adhesives.

Even in comparison to etch & rinse systems hardly any differences are noticeable.



# CLEARFIL™ S<sup>3</sup> BOND PLUS – your choice for a fast and easy bond

## Quick & simple application



1. Apply drop of bond  
No mixing, no shaking



2. Apply bond to the cavity wall  
No rubbing-in



3. Dry with mild air  
No multiple applying



4. Light-cure

## Product range

### CLEARFIL™ S<sup>3</sup> BOND PLUS

(CLEARFIL™ TRI-S BOND PLUS)



#### #2890-EU Set

1 bottle (4 ml), 50 Applicator brushes (fine),  
1 dispensing dish, 1 Light blocking plate

#### #2892-EU Bond Refill

1 bottle (4 ml)

#### #2893-EU Value Kit

3 bottles (4 ml)

#### #2898-EU Unit Dose Standard Pack

50 tips x 0.1 ml, 50 brushes

#### #2899-EU Unit Dose Value Pack

100 tips x 0.1 ml, 100 brushes

#### Product recommendation

#### CLEARFIL MAJESTY™ ES-2

(color selection)

1 syringe Classic: 3.6 g / 2.0 ml

1 syringe Premium: 3.6 g / 2.0 ml

1 syringe Clear, Amber, Blue, Gray:

1.8 g / 0.9 ml

## YOUR CONTACT

Kuraray Europe GmbH  
BU Medical Products  
Philipp-Reis-Strasse 4  
65795 Hattersheim am Main  
Germany

DACH: +49(0) 69-305 35 835  
Phone Rest of Europe: +49(0) 69-305 85 980  
Fax: +49(0) 69-305 98 35 835  
Email: dental.eu@kuraray.com  
Website: www.kuraraynoritake.eu



**Kuraray Noritake Dental Inc.**

1621 Sakazu, Kurashiki, Okayama 710-0801, Japan

**kuraray**

*Noritake*

**High-tech and high speed  
for high performers.**



**CLEARFIL™ S<sup>3</sup> BOND PLUS**

**The time saving one-step adhesive –  
your solution for fast and simple application.**

# CLEARFIL™ S<sup>3</sup> BOND PLUS – the one-step adhesive you can expect more from ...

## CLEARFIL™ S<sup>3</sup> BOND PLUS – performance in brief

CLEARFIL™ S<sup>3</sup> BOND PLUS is the one-step adhesive for direct restorations. It is developed based on CLEARFIL™ S<sup>3</sup> BOND technology which has five years clinical evidence.\* Etching, priming and bonding steps are completed with one-liquid, one-coat treatment.

But there is even more – the main benefit for using one-step adhesives is to reduce the technique errors which might occur. Thanks to its short application time and very simple procedure compared with other recent one-step products CLEARFIL™ S<sup>3</sup> BOND PLUS reduces technical errors. It allows a high error tolerance while creating excellent bond strength to enamel and dentin. This is enabled by Kuraray's innovative adhesive technology, which has been successful for more than 30 years.

Furthermore CLEARFIL™ S<sup>3</sup> BOND PLUS ensures a stable interface between tooth and composite resin due to Kuraray's new high performance initiator for light-curing, the original adhesive monomer MDP and the innovative Molecular Dispersion Technology.

The new CLEARFIL™ S<sup>3</sup> BOND PLUS also has a fluoride releasing property. In combination with the time saving and simple application procedure, this one-step adhesive will satisfy you with its excellent bond strength especially in different clinical situations, e.g. the therapy of children or core build-ups with the new CLEARFIL™ DC CORE PLUS.

CLEARFIL™ S<sup>3</sup> BOND PLUS – it's your choice for a fast and easy bond.

\* Source: S. Kubo, A. Kawasaki, A. Kawakubo, and Y. Hayashi: Five year clinical evaluation of two all-in-one systems, IADR Meeting 2011, Abstract #1144.

## Your advantages

- ✓ Quick & time-saving with only a single application step: no shaking, no mixing, no rubbing, no multiple application
- ✓ Easy to use for low technical errors
- ✓ Stable performance adhesive due to Kuraray's adhesive monomer MDP and the new high performance initiator
- ✓ Fluoride releasing property for a reinforcement of the adhesive-dentin interface
- ✓ Precise and economic dosing

## A wide range of indications!

CLEARFIL™ S<sup>3</sup> BOND PLUS is indicated for:

- Direct restorations using light-cured composite resin
- Cavity sealing as a pretreatment for indirect restorations
- Treatment of exposed root surfaces
- Post cementation and core build-ups using dual-cured composite resin CLEARFIL™ DC CORE PLUS
- Intraoral repairs of fractured restorations made of ceramic, hybrid ceramics or composite resin
- Core build-ups using light-cured composite resin
- Surface treatment of prosthetic restorations made of ceramic, hybrid ceramics or composite resin
- Surface treatment of dental posts

Your solution for a time-saving, simple and reliable adhesive!



**The performance of CLEARFIL™ S<sup>3</sup> BOND PLUS is explained by the name itself: SPEED. SIMPLICITY. STRENGTH.**

**The three decisive factors of CLEARFIL™ S<sup>3</sup> BOND PLUS.**

**1 SPEED**

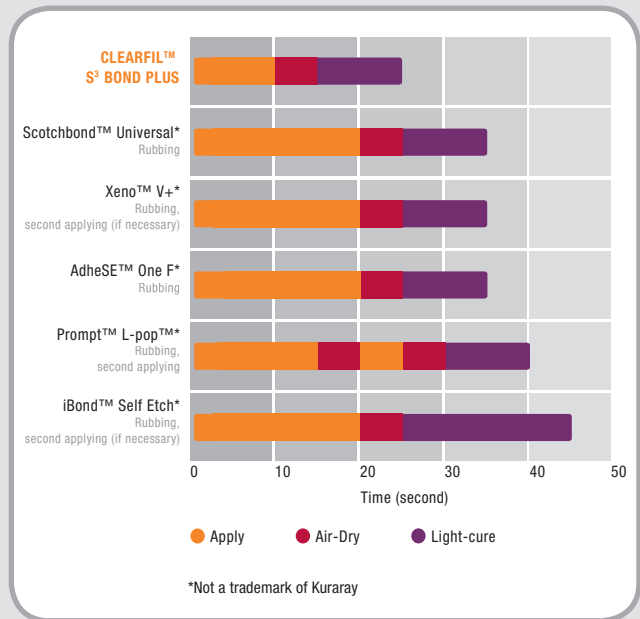
CLEARFIL™ S<sup>3</sup> BOND PLUS is always ready for immediate use in only three short steps:

**Apply, air-dry, light-cure – done in less than 30 sec.!**

Furthermore CLEARFIL™ S<sup>3</sup> BOND PLUS reduces the possibility of technique errors.

**2 SIMPLICITY**

CLEARFIL™ S<sup>3</sup> BOND PLUS is so easy and comfortable to use – time intensive work steps such as shaking the bottle, exact mixing and applying of several components, multiple layering and rubbing on to the tooth are no longer necessary.



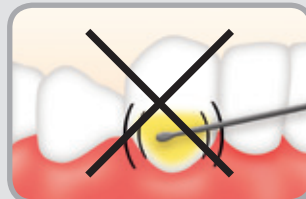
No shaking



No mixing



No rubbing-in



No multiple applying



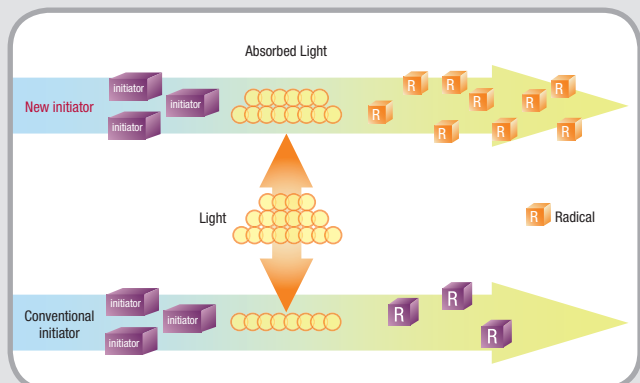
**3 STRENGTH:**

**The high performance initiator...**

The new high performance initiator can build more active radicals than the conventional initiator.

This unique technology improves your clinical performance while minimizing possible chairside errors which might occur such as the insufficient distance between light-curing unit and bonding surface or the air-drying method.

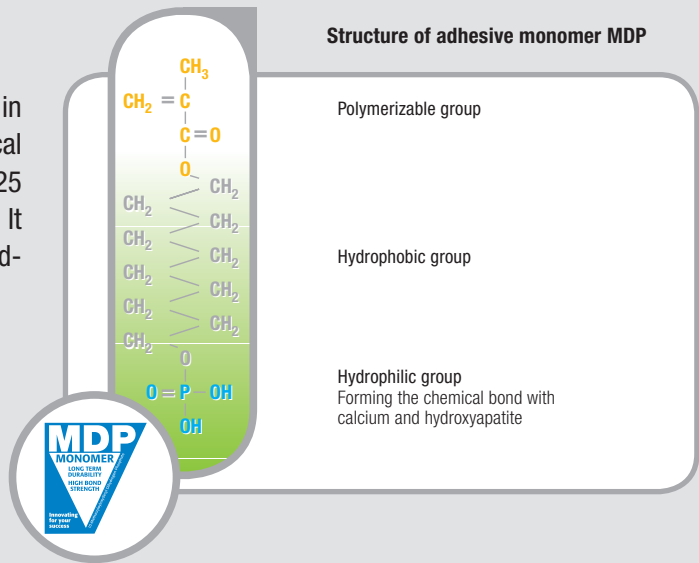
Furthermore, this unique technology increases the polymerization ratio and makes the bonding more stable against water. From this phenomenon you can expect excellent long-term performance as you already know from Kuraray.



... thanks to Kuraray's strong technologies.

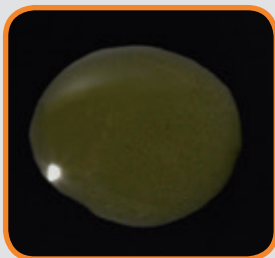
...and Kuraray's MDP monomer

Kuraray's unique adhesive monomer MDP contained in CLEARFIL™ S<sup>3</sup> BOND PLUS creates a strong chemical bond to hydroxyapatite. Being in use for more than 25 years, the MDP has a proven excellence in adhesion. It stands for a high bond strength and shows a reliable adhesion durability to the tooth structures.

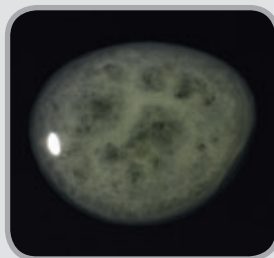


...and CLEARFIL™ S<sup>3</sup> BOND PLUS has even more to offer:

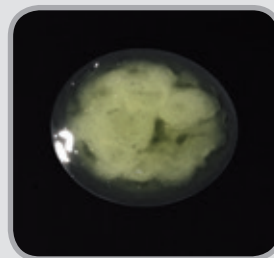
Kuraray's unique Molecular Dispersion Technology



CLEARFIL™ S<sup>3</sup> BOND PLUS  
no phase separation



Product A

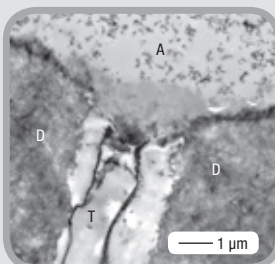


Product B

Source of pictures:  
Kuraray Noritake Dental Inc.

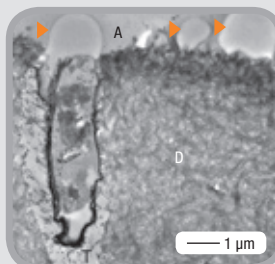
The innovative Molecular Dispersion Technology inside CLEARFIL™ S<sup>3</sup> BOND PLUS allows hydrophilic and hydrophobic components to be homogeneously combined. Thus, there is no phase separation, resulting in the formation of a homogenous layer on the preparation surface. Hence, CLEARFIL™ S<sup>3</sup> BOND PLUS is always ready to use and knows to convince with a high bond strength over time.

CLEARFIL™ S<sup>3</sup> BOND PLUS

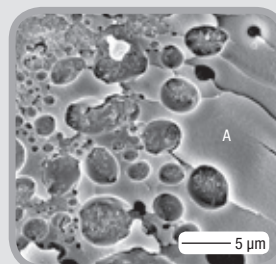


Cross-section

Product A



Cross-section



Interface

D: Laboratory demineralized dentin  
T: Dentinal tube  
A: Filled adhesive  
▶ Water droplets

These pictures show the resin-dentin interface when the adhesives were applied to coronal dentin in the presence of simulated intrapulpal pressure. There were no water droplets in CLEARFIL™ S<sup>3</sup> BOND PLUS. In Product A, water droplets were observed.

Source of picture: Prof. Dr. H. Pashley and Prof. Dr. F. R. Tay. Georgia Health Sciences University, USA.